

PRODUCT RANGE *2025*



JAEGERLACKE

Tradition, innovation and emotions!

Already since it was founded in 1908, Paul Jaeger GmbH & Co. KG has had its head office in Möglingen, Swabia, in the middle of the „Home of the Tinkerers“). Here, we practise innovative Made in Germany and offer a wide range of high-quality specialities in the area of decorative paints. As a medium-sized enterprise with a rich tradition and independent from a corporate group, with approximately 60 employees, we maintain a personal, family style to this day. 10 committed sales force employees look after paint wholesalers. The professional qualification of young people is particularly important to us: We have an impressive 10% quota of vocational trainees.

Comprehensive customer service characterises our company profile. In addition to the Jaeger app, the highlights include our website, which is always up-to-date, our technical service hotline, many application videos and a regular newsletter and our presence in social networks, such as Facebook and YouTube.

Quality, competence and experience!

We see ourselves as a quality leader in the area of remediation, renovation and modernisation. That is why the highest quality standards are self-evident for us. Safety and trust in the reliability of products are real added-value for retailers and processors. Professional competence and experience form the basis for constant optimisation of the well-proven Jaeger specialities.

At the centre of our activities are the JAEGER core competences: We present the product building blocks, insulation and sealer paints, primers, bathroom renovation products, anti-mould paints, marking paints and floor coatings. A particular emphasis is our well-known Villa Venezia creative range, which already looks back on a twenty-year success story. This year, we are also showing you new techniques and materials for trendy wall designs.

1908

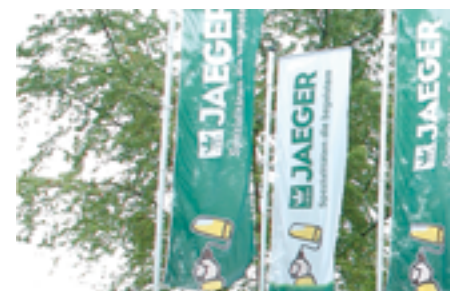
1920

1930

1940

1950

1960



1970

1980

1990

2000

2010

2020

CONTENTS

 G	Primers Page 6-7	 I	Insulating and Sealing Paints Page 8-11	 R	Renovation Paints Page 12-13
 BK	Office- and communication paints Page 14-15	 HS	Clear Wood Lacquer / Parquet Sealing Page 16-17	 H	Radiator Paint Page 18-19
 BR	Bath Renovation System Page 20-23	 KL	Metal Protection Lacquers Page 24-26	 P	Poolcoats Page 27
 B	Floor and Concrete Coatings Page 28-29	 A	Anti-slip Coatings Page 30-31	 M	Marking Paints Page 32-36
 SL	Special Protection Lacquers Page 37	 V	Special Thinners / Cleaning Agents Page 38-39	 S	Fillers Page 40-41
 DS	Roof Protection Page 42	 KS	Löwe Rust Protection Range Page 43	 W	Accessories Page 43
 Vw	Villa Venezia – Decorative Painting Page 44-53	 D	Deco Wall & Floor Seamless filler Page 54-55		

Legende

 Interior	 Spray on	 Shake well	 Anti-mould ingredients included.	 Suitable for use in food processing plants.
 Exterior	 Airless-spray	 Lacquer and curing agent	 Tested by an independent institute.	 Suitable for children's toys.
 Brush application	 Finishing	 Drying Time		
 Roll on	 Filling	 Waterbase		

SERVICE

YOU TUBE CHANNEL

Visit our YouTube channel!

There you will find our processing videos on Jaeger Villa Venezia creative techniques, marking paints, bathroom renovation and floor coatings. Here you will be shown step by step the proper and professional application of our techniques.
www.youtube.com/user/jaegerlacke

SOCIAL MEDIA

New meeting place for friends and professionals!

Click right in, on the Jaeger pages you will find current information, all dates and contacts to many colleagues and professionals. As a member of the new Jaeger Community, you are guaranteed to be kept up to date with all the latest news. We are looking forward to meeting you!

www.facebook.com/jaegerlacke

www.instagram.com/jaegerlacke

www.pinterest.de/jaegerlacke

www.tiktok.com/@jaegerlacke



WHOLESALE CONCEPTION

- + Compact product range
- + Comprehensive on-site service
- + Holistic brand presence
- + System modules in focus
- + Attractive sales promotions
- + Trade marketing support
- + Availability of many system products directly to take away, and much more.

We will be happy to present you further advantages of our wholesale concept. Please contact us!



PRIMERS

819

Kronalit® Epoxy-Primer



Two-component, epoxy-based primer. Primer paint for iron, steel, aluminium galvanised surfaces on machines, appliances and steel constructions that are subject to high mechanical and chemical stress. Can be topcoated with Kronalit® Buntepoxy 862.

Thinning: Special thinner 806.

- Resistant to water and many chemicals.
- Resistant to temperatures from -30°C to +140°C, dry heat, and up to +40°C in humid heat.
- Spreading rate (m²/kg): brush application/roll on: 5-7 per coat



Item No./ Shade	Container size	Carton contents
819-7035 lightgrey	1 kg net 6 kg net	6

883

Catalyst



Highly reactive catalyst for improving the adhesion for Kronalit Epoxy Priming Paint 819 and Kronalit Buntepoxy 862.

Mixing ratio: 5 % catalyst after addition of hardener.

- suitable for adhesion improvement

Item No./ Shade	Container size	Carton contents
883-000k	250 ml	

864

Kronalit® Specialist Priming Resin



Specialist priming resin is the ideal primer for all mineral substrates. This creates a sturdy and secure substrate for the following topcoats.

- Hardens quickly Solvent free, no odour
- Easy to apply
- Covers cracks
- Reinforcing
- Spreading rate (m²/kg): brush/rolling: approx. 5



Item No./ Shade	Container size	Carton contents
864-0000 clear	2 kg 10 kg	1

715

Multiprimer

Universal primer for bond coatings on iron, steel, zinc, aluminium, various plastics, such as rigid PVC, polyester, polyamide, ABS and wood. Also usable for powder coated surfaces and anodized aluminium. Thinning: Special thinner 44.

- Anticorrosive
- Weather-resistant
- Quick drying
- Extremely good adhesion properties
- Nitro-resistant
- Spreading rate (m²/l):
brush application/roll on:
approx. 10
spray: approx. 7



Item No./ Shade	Container size	Carton contents
715-3009 red-	125 ml*	12
715-6011 brown	375 ml	6
715-6011 green	750 ml	6
715-7001 grey	2,5 l	4
715-9010 white		
715-9005 black		



*available in white and grey

714

Multiprimer-Spray

Universal primer. Similar applications to those of Jaeger Multi-Primer 715. The sensible corrosion protection and bonding agent on many types of substrate.

Spraymaster cf p. 45



- Active corrosion protection
- Weather-resistant
- Quick drying
- Extremely good adhesion properties
- Nitro-resistant
- Spreading rate:
1,5-2 m²/400 ml spray



Item No./ Shade	Container size	Carton contents
714-7001 grey	200 ml*	6
714-9010 white	400 ml	6



* available in white

New: Black color
With variable spray head

716

Aqua Multiprimer

Water-thinnable universal primer for bond coatings on iron, steel, zinc, aluminium, various plastics, such as rigid PVC, polyester, polyamide, ABS and wood.

- Active corrosion protection
- Weather-resistant
- Quick drying
- Extremely good adhesion properties
- Spreading rate (m²/l):
brush application/roll on:
9-12
spray: approx. 6



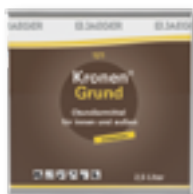
Item No./ Shade	Container size	Carton contents
716-9010 white	750 ml 2,5 l	6 4



INSULATING AND SEALING PAINTS

121

Kronengrund®, brown tin



Clear, high-penetration primer for interior and exterior surfaces. For use as a primer on absorbent surfaces such as gypsum, gypsum plasterboard, lime and cement plaster, concrete, Eternit, wood and derived timber products. Also on mineral substrates that are chalking slightly or that need to be compacted.

- For interior and exterior surfaces
- Quick drying
- Resistant to yellowing
- Spreading rate (m²/l):
brush application/roll on:
10-12
spray: 7-8



Item No./ Shade	Container size	Carton contents
121-0000 clear	375 ml	6
	750 ml	6
	2,5 l	4
	5 l	4

122

Kronen® Insulating Spray clear



Clear insulating and sealing primer. Applications as for Kronengrund® 121. Spraymaster: for professional priming directly on site.

Spraymaster cf. p. 45



- Quick drying
- Does not affect polystyrene foam
- Good insulating and sealing properties
- Non-yellowing
- Spreading rate:
1,5-2 m²/400 ml spray



Item No./ Shade	Container size	Carton contents
122-0000 clear	400 ml	6

123 HS

Kronen® Stain Insulating white HS



Insulating and sealing primer, white. Prevents surface bleeding from all types of stains, such as nicotine, asphalt, tar, carbolineum, bitumen, smoke and rust stains, crayons and water stains on plaster, concrete, wood and fibrated concrete.



- Free of aromatic compounds
- For interior and exterior surfaces
- Only one coat required
- Suitable for application on polystyrene foam
- Quick-drying
- Spreading rate (m²/l):
brush application/roll on:
approx. 7



Item No./ Shade	Container size	Carton contents
123-HS90 white	375 ml	6
	750 ml	6
	2,5 l	6
	5 l	6

124

Kronen® Insulating Spray



Der Klassiker!

Insulating and barrier primer, white. Prevents bleeding through of all kinds of soiling such as nicotine, asphalt, tar, carbolineum, bitumen, smoke and soot stains, paint stains and water marks on plaster, concrete, wood and fibre cement. Spraymaster: For professional painting directly on the construction site! Spraymaster 200 s. S. 45



- Good insulating and sealing properties
- Quick drying
- Suitable for polystyrene foam
- For use on various critical surfaces
- Spreading rate:
1,5-2 m²/400 ml spray



Item No./ Shade	Container size	Carton contents
124-9010 white	200 ml	6
	400 ml	12

317

Kronen® Aqua Iso weather protection paint



3 in 1: Primer, insulation and finishing coat. Insulating weather protection for wood-based materials. Aqua Iso weather protection paint offers a very good weather resistance, can be used directly without primer, and fully utilizes the highly effective insulating properties for wood-based materials.



3 in 1: Primer, insulation and finishing coat

- excellent insulation ability for wood-based materials
- very good weather resistance
- can be tinted with common colour tone concentrates within the pastel range
- low odour
- Coverage: Class 1 at 7 m²/l
- Coverage (m²/l): painting/rolling: 5-7

Item No./ Shade	Container size	Carton contents
317-9010 white semi-matte	750 ml 2,5 l 5 l	3 2

319

Kronen® Wood Insulating and Finishing Paint



Kronen® Wood, Insulating and Finishing Paint is particularly suitable for matte or semi-gloss wall and ceiling coatings on (old) wooden ceilings, MDF, OSB panels, chipboards or hardboards.



3 in 1: Primer, insulation and finishing coat

- on a water basis
- overpaintable after approx. 4 hours*
- good insulating effect against bleeding wood components
- high coverage
- ideal for wood ceilings and panels
- coverage (m²/l): painting/rolling: 5-7

Item No./ Shade	Container size	Carton contents
319 0002 weiß, seidenglänzend	750ml 2,5 l	3 2
319 0003 weiß, matt	5 l	

* 20°C/55% r.F.



INSULATING AND SEALING PAINTS

321

Kronen® Aqua Insulating Primer



Clear, water-thinnable primer and sealer. For use on wood, hardboard, polystyrene, gypsum plaster, mineral surfaces, old lacquers and emulsion paints prior to subsequent application of lacquer. Insulates tar, carbolineum, asphalt, bitumen, rust, nicotine and water stains.

- Improves washability of emulsions
- Quick drying
- Water and dirt-resistant
- Rigid with elastic properties
- Diffuses water vapour
- Seals absorbent surfaces
- Spreading rate (m²/l):
brush application/roll on:
8-10
spray: 8-10



Item No./ Shade	Container size	Carton contents
321-0000 clear	750 ml 2,5 l	3 2

323

Kronen® Aqua White Insulating Paint



Water-thinnable, white insulating and sealing paint. Insulates against all kinds of soiling agents, such as nicotine, tar, carbolineum, bitumen, smoke and rust stains, crayons and water stains on old emulsion paints, gypsum plasterboard, polystyrene, derived timber products or mineral surfaces.

- For use on various critical substrates
- Premixed, ready for use
- Spreading rate (m²/l):
brush application/roll on:
5-7
spray: 4-6



Item No./ Shade	Container size	Carton contents
1323-9010 white	750 ml 2,5 l	3 2



www.blauer-engel.de/uz12a

127

Kronen® Iso Moisture Blocker



For the insulation of contaminations like water spots and the absorbing of moisture on mineral substrates like plaster, concrete, in cellars, garages, on facades, walls, etc. in the inner and outer areas. Helps when hindering salt efflorescence. Suitable for water spots, nicotine, rust, grease, stains, crayons and wall efflorescence. Easy to work, high coverage, odourless. Suitable for usw in food processing areas!

- Protects against moisture
- Is also adhesive on damp substrates
- For interior and exterior applications
- Alkali and mildew resistant
- Suitable for water stains,
- Nicotin, soot, grease, dirt stains, crayons and wall-efflorescence
- Spreading rate (m²/l):
brushing/rolling: 4-5



Item No./ Shade	Container size	Carton contents
1127-9010 white	750 ml 2,5 l	3 2

Suitable for use in food processing areas!



580

Keller® Kellergrund



Clear, high-penetration primer for interior and exterior surfaces. For use as a primer on absorbent surfaces such as gypsum, gypsum plasterboard, lime and cement plaster, concrete, Eternit, wood and derived timber products. Also on mineral substrates that are chalking slightly or that need to be compacted.

- Quick drying
- 100% light-resistant
- Resistant to yellowing
- Permanent elasticity – does not crack
- Spreading rate (m²/l):
brush application/roll on:
10-12
spray: 7-8



Item No./ Shade	Container size	Carton contents
80-0010 clear	375 ml	6
	750 ml	6
	2,5 l	6

581HS

Keller® Insulating Primer HS



Insulating and sealing primer, white. Prevents surface bleeding from all kinds of stains such as nicotine, asphalt, tar, carbolineum, bitumen, smoke and rust stains, crayons and water stains on plaster, concrete, wood and fibrated concrete.

- Quick-drying
- 100% light-resistant
- Resistant to yellowing
- Permanent elasticity – does not crack
- Spreading rate (m²/l):
brush application/roll on:
10-12
spray: 7-8



Item No./ Shade	Container size	Carton contents
581-HS90 white	375 ml	6
	750 ml	6
	2,5 l	6

584

Keller® Insulating Spray



Insulating and block varnish, white. Hinders the bleeding of stains of all types like nicotine, asphalt, tar, carbilineum, bitumen, smoke and rust stains, crayons and water edges on plaster, concrete, wood and fibre cement.

Spray master: For professional painting directly on the construction site!
Spraymaster cf. p. 45



- Good insulating and blocking effect
- Fast drying
- Does not corrode Styrofoam
- For a lot of critical surfaces
- Spreading rate (m²/l):
1,5-2 m²/400ml spray



Item No./ Shade	Container size	Carton contents
584-9010 white	400 ml	6

RENOVATION PAINTS

335

Kronen® Aqua Renofix



Kronen® Aqua Renofix 335 is a white, quick drying, water-soluble sealer for interior rooms. Particularly suitable for matte wall and ceiling coatings on old dispersion coats, plasterboard, woodbased materials, Styrofoam® or mineral substrates. Kronen® Aqua Renofix 335 offers in addition excellent insulation ability and is plasticiser- and aromaticfree.



**Wet abrasion class 2
(DIN EN 13300)**

- excellent insulation ability
- fast paint-over ability
- very good coverage includes also water-soluble stains
- plasticiser-free
- aromatic-free
- suitable for Styrofoam®
- with popular pastel shade concentrates tinted
- coverage (m²/l):
painting/rolling: 5-7



Item No./ Shade	Container size	Carton contents
335-0800 white	2,5 l 12,5 l	2



423

Kronen® Renovation paint



Insulating paint for interior areas, insulating, good opacity. For matt wall and ceiling paint finishes. Suitable for heavily stained areas on indoor surfaces and on old, stable distempers that cannot be retouched with standard emulsion paints. For insulating water and nicotine stains; also suitable for application on polystyrene foam, can be topcoated with emulsion paint. Thinning: Special thinner 42

**Wet abrasion class 1
(DIN EN 13300)**

- Suitable for application on polystyrene
- Good opacity
- Very good stain insulating properties
- Wet abrasion resistance Class 1 (DIN EN 13300)
- Spreading rate (m²/l):
brush application/roll on:
3-5
spray: 3-4



Item No./ Shade	Container size	Carton contents
423-9010 white	2,5 l 12,5 l	2





424

Kronen® Renovation Spray



Kronen® Renovation Spray blocks and covers penetrating soiling on facades and interiors such as red wine, coffee, ivy, graffiti, crayons, blood, water stains, nicotine, grease, oil and much more without further painting.

The matt surface allows invisible and quick touch-ups on white-painted surfaces.

Spraymaster: For professional painting directly on the construction site!

Spraymaster 200 s. S. 45



Click here
to the video

- 2 in 1: Barrier and top paint in one
- Wet abrasion resistance class I (DIN EN 13300)
- high hiding power: class 1
- Weather and UV stable
- suitable for graffiti soiling
- very good barrier effect
- very fast drying
- low odor
- suitable for use in food processing areas
- Spreading rate: ca 2 m²/400ml

Item No./ Shade	Container size	Carton contents
424-9016 matt white RAL 9016	400 ml	6

425

Kronen® Objekt-Reno



Kronen® Objekt-Reno is an airless sprayable, high covering insulating and varnish paint. For dirty surfaces, on nicotine, water and fire stains. Particularly ideal for large objects like industrial, factory and storage halls. High yield, high coverage, very fast drying, aromatic-free, odourless, suitable on Styrofoam.

- Aromatic-free
- Dourless
- Suitable for Styrofoam
- High coverage
- Airless-sprayable setting
- For rational usage by large objects
- Wet abrasion resistance Class 1 (DIN EN 13300)
- Spreading rate (m²/l):
brush application/roll on:
approx. 5-7

Item No./ Shade	Container size	Carton contents
425-9010 weiß	12,5 l 30 l on request: 200 l barrel, 1000l IB-Container	

Suitable for use in food processing areas!

OFFICE- AND COMMUNICATION PAINTS

390

2K-Aqua whiteboard paint



With the two-components whiteboard paint, any flat surface can now be transformed into a whiteboard wall very unobtrusively. The best thing about it: It doesn't need to be white at all, for a subtle or striking colour design, the whiteboard paint is also available as a transparent coating. High-quality coating based on aqueous PUR; writable with whiteboard pens and easy to clean. Can be combined with Aqua Magnetic Paint 393 as background coating for multifunctional surfaces.

- for multifunctional surfaces: Pre-Paint with JAEGER Aqua magnetic paint
- white or transparent
- glossy or matt
- easy to apply and clean
- can be written on with whiteboard pens (e.g. Edding® 250)
- outstanding weather and UV resistance
- high covering power
- Spreading rate (m²/kg): painting/rolling: 6

Learn more



clear and white - glossy and silk gloss!



Item No./ Shade	Container size	Carton contents
390-0801 white glossy	750 g	1
390-0802 silk gloss white	2,5 kg	1
390-0001 clear glossy		
390-0002 clear silk gloss		

396

1K whiteboard paint



No hardener, no repotting, no leftovers - the new ready-to-use 1K whiteboard paint puts an end to tedious preparation and wasted materials. One work step is enough. After just one day, the new whiteboard is completely dry and ready to write on.

Learn more



- Only 1 work step
- Writable after 24 h
- Mild odour
- Colourless glossy
- For interior and exterior use
- Weather and UV-resistant
- Spreading rate: ca 12 m²/l



Item No./ Shade	Container size	Carton contents
396-0001 clear glossy	250 ml	3

082

Whiteboard cleaner



Whiteboard Cleaner is a highly effective cleaner for whiteboards of all kinds and can be used indoors without any problems. Ideal for removing dirt from whiteboard markers. Simply spray on Whiteboard Cleaner 082 and dirt can be removed after a short time.

- easy cleaning of whiteboard surfaces
- high effectiveness



Item No./ Shade	Container size	Carton contents
082-0000	250 ml	1

Discontinued item. Available while stocks last.

083

Whiteboard Cleaning wipes



Whiteboard cleaning wipes for removing whiteboard markers. Ready-to-use alcohol-free cleaning wipes for quick and easy cleaning of whiteboards. Perfect for offices, conference and training rooms or schools.

- Ready-to-use alcohol-free cleaning wipes
- 50 wipes á 18 x 20 cm
- Reclosable packaging prevents drying out

Item No./ Shade	Container size	Carton contents
083-0000	50 wipes	1

Discontinued item. Available while stocks last.

391

Aqua Projection paint



Special coating on interior wall surfaces for matt white projection surfaces of all kinds such as projectors, overhead projectors, etc. For highest color fidelity, image sharpness and contrast.

The luxurious matt surface of the coating guarantees particularly even reflection of the light. Optimum light scattering ensures excellent visibility with a wide viewing angle

Learn more:



- luminous, brilliant reproduction of images and text from every viewing angle
- easy to apply
- very high-build
- good spreading properties
- high coverage
- pure white extra matt surface (RAL 9016)
- Spreading rate: ca 6 m²/l



Item No./ Shade	Container size	Carton contents
391-9016	750 ml	3
matt white	2,5 l	4

393

Aqua magnetic paint



With JAEGER Aqua magnetic paint, any wall surface can be very easily magnetised. Aqua Magnetfarbe 393 mit einer Dispersionsfarbe oder anderen Funktionsfarben wie 2K-Aqua Whiteboardfarbe 390, Aqua Schultafellack 394 oder Aqua Projektionsfarbe 391 überstreichbar für Multifunktionswände.

Learn more:



- Environmentally friendly and low odour
- On a water basis
- Combinable with 2K-Aqua whiteboard paint 390, Aqua blackboard paint 394 or Aqua projection paint 391 for multifunctional walls.
- Simple fastening of notes, drawings etc. directly to the wall
- Spreading rate (m²/kg): painting/filling: ca. 2



Item No./ Shade	Container size	Carton contents
393-9005	1,5 kg	6
graphite grey	5 kg	4

394

Aqua blackboard paint



Aqua blackboard paint is a matt board paint for producing blackboards, bulletin boards and price boards, which are written on with chalk. Also suitable for table tennis boards
Colours: Matt black and matt green

Learn more:



- weather-resistant
- chalk-resistant
- non-reflective
- easy to apply and clean
- Spreading rate (m²/l): painting/rolling: ca. 10
praying: ca. 10



Item No./ Shade	Container size	Carton contents
394-0900	375 ml	
matt black	750 ml	
394-0600		
matt green		

CLEAR WOOD LACQUER AND PARQUET SEALING

670

Kronen® 1K-Aqua-Parquet Sealer



High abrasion resistance properties!

Aqueous sealer for parquet and wooden flooring subject to regular use, such as in residential areas. Highly abrasion and light resistant parquet finish on an acrylate PU basis with excellent build and good spreading properties. Kronen® 1K-aqua parquet sealer has excellent resistance to foot steps and standard household chemicals.

- Excellent abrasion resistance
- Very high build
- Good resistance against footsteps and standard household chemicals
- High light resistance
- Spreading rate (m²/l): 8-10



Item No./ Shade	Container size	Carton contents
670-0102	750 ml	6
satin gloss	2,5 l	4
670-0104	10 l	
dull matte		

690

Kronen® Yacht and Boat Varnish



To protect and seal wood on boats above the water line. Also suitable for indoor and outdoor garden furniture.

- abrasion-resistant and scratch-resistant
- high filling power
- long durability
- ductile film
- good firing of the wood
- easy to apply
- Coverage(m²/l): painting/rolling: 8-10



Item No./ Shade	Container size	Carton contents
690-0001 clear	750 ml	3
glossy	2,5 l	2



695

Kronen® Exquisite Sealer



Clear PU-compound sealer, one-component system as a protection or finish on hard or soft wood surfaces. For use as a sealer on parquet floors and wood flooring subject to moderate use; as a protective surface coating of refinement for wall and ceiling facings, doors, chairs, tabletops and similar objects. Thinning: Special thinner 68

- Easy to apply
- Abrasion and scratch-resistant
- High build
- Excellent durability
- Low-odour solvent
- Spreading rate (m²/l):
brush application/roll on:
8-10
spray: approx. 8



Item No./ Shade	Container size	Carton contents
695-0001 clear	375 ml	6
gloss	750 ml	6
695-0002 clear	2,5 l	4
satin gloss		
695-0003 clear		
tuff dull		



RADIATOR LACQUER

279/280/281

Sinolin® Radiator Lacquer plus



Field of application: Heat-resistant paint for radiator coatings for all radiators up to 80°C temperature peak. Properties: Mild odour, excellent hiding power, good flow, little spray mist, easy application, no embrittlement, fast drying. Spraymaster: For professional painting directly on the building site!

Spraymaster 200 s. S. 45

- Firm to the touch in 60 min.
- Extra mild odour
- White & anthracite
- In 3 gloss levels
- Heat resistant up to 80°C
- Spreading rate: 1,5-2 m²/400 ml Spray



Item No./ Shade	Container size	Carton contents
279-9016 white hgl.	400 ml	6
280-9016 white sgl.		
281-9016 white matt		
279-7016 Anthracite grey hgl.		
280-7016 Anthracite grey sdbl.		
281-7016 Anthracite grey matt		

Also available in matt. White and anthracite.

377

Sinolin® Aqua Radiator Lacquer



Application: Water-thinnable special lacquer for heat-resistant coatings. Properties: Heat-resistant up to 120°C, non-yellowing, quick-drying, low-odour, very good flow, good hiding power, good resistance to common household cleaners. Tintable in RAL and NCS.

- available in 3 gloss levels
- excellent hiding power
- mild odour
- heat resistant up to 120 °C
- fast drying
- non-yellowing
- Spreading rate (m²/l):
brush application/roll on: 8-10
spray: ca. 6



Item No./ Shade	Container size	Carton contents
377-0001 white hgl.	750 ml 2,5 l	6
377-0002 white sgl.		
377-0004 white matt		

Also in matt.



277

Sinolin® Radiator Lacquer



Heat-resistant synthetic resin lacquer for painting heating units. For use with all hot water and steam heating systems up to 150°C. High heat resistance; no peeling or cracking, even when exposed to short-term thermal stress up to approx. 150°C. Thinning: Special thinner 68

- Excellent opacity
- Good spreading properties
- Does not run off on vertical surfaces
- Good spreading rate
- No embrittlement
- Shock-proof and impact-resistant
- Spreading rate (m²/l):
brush application/roll on:
8-10
spray: 6-8

Item No./ Shade	Container size	Carton contents
277-9010 white high gloss	375 ml / 750 ml	6 / 6
277-0002 white* satin gloss	2,5 l / 10 l	6

*just in 750 ml and 2,5 l available

Silk gloss and high gloss.

278

Sinolin® Radiator Lacquer Spray



Heat-resistant, synthetic resin lacquer from a spray can. High heat-resistance, even when exposed to short-term thermal stress up to approx. 150°C. Spraymaster: For professional application directly on site! Spraymaster cf. p 45

- No peeling or cracking
- High gloss
- Good build
- Excellent opacity
- Good spreading properties
- No embrittlement
- Shock-proof and impact-resistant
- Spreading rate:
1,5-2 m²/400 ml spray

Item No./ Shade	Container size	Carton contents
278-9010 white high gloss 278-0002 white* satin gloss	400 ml	6

Silk gloss and high gloss.



BATH RENOVATION SYSTEM

887

Bathtub Lacquer



Solvent-free, 2-component system. For renovation and repainting in different colours of enamel surfaces such as bathtubs shower trays, and tiled surfaces. The professional set consists of the following: 2-component paint, brush, foam roller, paint tray, decalcifier, cleaner, tack cloth, 4 sheets of sandpaper in 2 different grits, application instructions.

- Solvent-free
- High gloss and extremely durable
- No tub removal needed, no mess
- Permanent resistance to warm water
- Spreading rate: (1 Set)
1 bath tub (approx. 2.8 m²)
or 2 shower trays



Item No./ Shade	Container size	Carton contents
887-0800 pure white 0020 alpine white 0023 bahama beige 0027 manhattan grey 0029 pergamon	Set	1



To the video



20

886

Acrylic Bathtub Primer



Special adhesive primer for sanitary acrylic. Water-based. For use as a primer on one bath tub (approx. 2.8 m² in area) or for 2 shower trays. For subsequent painting with Jaeger Bathtub & Tile Lacquer 887.

- Water-based
- High-quality adhesive primer for sanitary acrylic
- Spreading rate: (100 ml)
1 bath tub (approx. 2.8 m²)
or 2 shower trays



Item No./ Shade	Container size	Carton contents
886-0000	100 ml	1



To the video





081

Tile Cleaner



This tile cleaner is a highly effective cleaner for tiled surfaces for the subsequent coating with Aqua Tile Finish. It is solvent-free and can therefore also be used indoors without any problems. Ideal for removing dirt such as soap residues, shampoo, hair-spray, oily and greasy residues. It is highly effective, with its synergetic combination of active substances. Stubborn stains are also removed this way.

- highly effective cleaner
- Ideal for removing dirt such as soap residues, shampoo, hairspray, oily and greasy residues.
- solvent free

Item No./ Shade	Container size	Carton contents
081-0000	500 ml	12

875

Aqua Tile Finish



Single-component tile finish on a water basis without primer for coating indoor ceramic wall tiles. Aqua Tile Finish is a primer, finishing coat and sealing in one step, so that renovation of tile surfaces will be simplified considerably in future. Remove lime scale and clean tiles, then apply the product twice by brushing, rolling or spraying on - the new bathroom is finished. Outstanding adhesion without primer and the excellent coverage support user friendliness.

- very good coverage
- water soluble, low odour
- adheres directly to tiles, no sanding, no primer
- 3 in 1 system: Primer, finishing coat and sealing in one step
- Spreading rate: ca. 8 m²/ltr.



Item No./ Shade	Container size	Carton contents
875-	750 ml	3
0800 neve (white)	2,5 l	2
0100 cotone		
0700 quarzo		
0701 perla		
0702 grafite		
0801 canapa		
0802 terra		



3 in 1 system: Primer, finishing coat and sealing in one step

897

Tile Lacquer



Solvent-free 2 component system. For renovation and colourful repainting of tiled walls and enamel surfaces like bathtubs and shower trays. Not suitable for floor tiles. The professional set consists of the following:
2-component paint (base, hardener), brush, foam roller, paint tray, decalcifier, cleaner, tack cloth, 4 sheets of sand paper in 2 different grits, application instructions.

- Solvent-free
- High-gloss and extremely durable
- Primer, finishing coat and sealer in one operation
- Spreading set: approx. 6.8 m² tile surface



Item No./ Shade	Container size	Carton contents
897-0800 pure white	Set	1
0020 alpin white		



Scan here for the video



BATH RENOVATION SYSTEM

890

Ceramic-, Enamel- and Acryl-Repair Set



The Ceramic-, Enamel- and Acryl-Repair Set is for repairing damaged surfaces on sanitary ware and for repairing damage and removing scratches of enamel, ceramic and acrylic washbasins, bathtubs and shower trays.

The professional set consists of the following:

- 1 x 36 ml repair lacquer spray
- 1 x 30 g tin of ceramic filler
- 1 x 8 g tube of curing agent
- 2 pieces of sandpaper, 1 spatula

- Easy to apply
- Resistant to standard household cleaners
- High-quality acrylate for enhanced resistance
- Suitable for acrylic bathtubs



Item No./ Shade	Container size	Carton contents
890-0800 pure white 0020 alpin white	Set	6



894

Ceramic-, Enamel- and Acrylic Touch-up Pen



To repair minor damage and remove scratches on ceramic, enamel or acrylic surfaces, e.g. on washbasins, washing machines, electric cookers, tiles, shower trays or bathtubs.

- Easy to use
- High-quality acrylate for enhanced resistance
- Suitable for acrylic bathtubs



Item No./ Shade	Container size	Carton contents
894-0800 pure white 0020 alpin white 0023 bahamabeige 0027 manhattan grey 0029 pergamon	12 ml	



808

Universal Putty for Tiles and Wall Surfaces



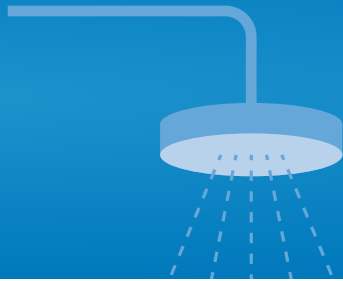
Dispersion and cement based putty, directly on tiles, for stopping cracks and holes and touching up, smoothing and levelling facades, wall and floor surfaces.

Universal putty for Tiles and Wall Surfaces is ideally suited for touching up, smoothing, levelling and covering all mineral substrates, such as lime and cement plasterwork, gypsum finish, concrete, aerated concrete, brick and firmly bonding substrates such as synthetic resin plaster and old coats of paint.

- Ideal adhesion to tiles, no primer required
- Bonds without cracking in layer thicknesses of up to 10 mm.
- An ideal base for decorative painting techniques
- Quick-drying and can be reworked
- Spreading rate: 1 kg powder to 1 m² at 1mm application thickness



Item No./ Shade	Container size	Carton contents
808-0000	5 kg	



Private Households



Before

old tiles:
look like new with
JAEGER tile lacquer



After

old tiles:
are simply covered with
universal putty 808 and
creatively designed.

Dull bathtub:
is simply painted with
JAEGER bathtub lacquer

private bathroom

Inns/Hotels

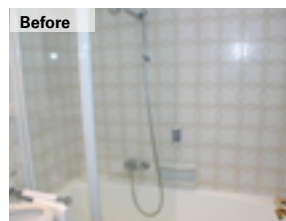


Before

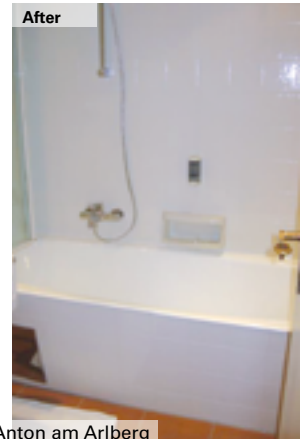


After

Inn, Hengstetter Hof, Althengstett



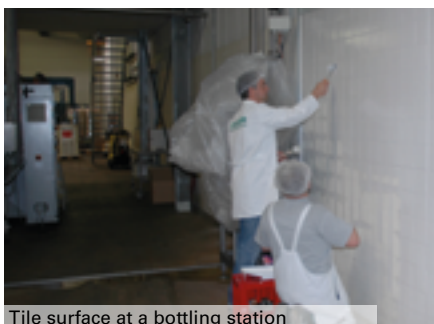
Before



After

Bathroom in the Hotel Tyrol, St. Anton am Arlberg

Industry/Schools/Gymnasiums/Dressing Rooms



Tile surface at a bottling station



Tile surface dairy farm in Hungen



Shower rooms, school gymnasium

METAL PROTECTION LACQUERS

246

Kronen® Gold Varnish - Silver Varnish - Copper Varnish



Kronen® gold varnish, silver varnish, copper varnish is a decorative metallic glossy varnish for the finishing surfaces of all kinds. Weatherproof, quick drying, easy to apply and temperature resistant up to 80°C. The metallic colour is suitable for metal, plastic, wood and glass.

- metallic glossy surface
- easy to apply
- for inside and outside
- quick-drying
- temperature resistant up to 80°C
- wipe-resistant
- firm to the touch
- weather-resistant
- Spreading rate:
brush application: 7-8 m²/l

Item No./ Shade	Container size	Carton contents
246-0700 Gold	375 ml	6
246-0701 Silver	750 ml	6
246-0704 Copper		

935

Perlauch® Aqua Patina colour green



Special-effect aqua-based paint for stylish patina coatings on decorative ironwork. Patina paints for all decorative ironwork articles with Perlauch® matt lacquer finishes, such as railings, gates, grilles, lamps, barriers, etc.

- Easy to apply
- Quick-drying
- For interior and exterior surfaces
- Spreading rate:
depends on the work piece and the desired effect.

Item No./ Shade	Container size	Carton contents
935-0000 green	125 ml	6

932

Perlauch® patina colour



Perlauch® Patina Paint is a highly decorative paint for the refinement of wrought-iron works. It is suitable for indoor and outdoor use, e.g. as a finish for all wrought-iron works treated with Perlauch® Aqua Ironwork Lacquer.

- easy to apply
- for inside and outside
- temperature resistant up to approx. 80°C
- weather-resistant
- Spreading rate:
depends on the work piece and the desired effect.

Item No./ Shade	Container size	Carton contents
932-0700 gold	125 ml	6
932-0701 silver		
932-0704 Copper		

609

Metal Conservation Lacquer Spray



Colourless, glossy cover lacquer for many substrates like brass, chrome, zinc, iron, stainless steel, copper. Light and weather resistant, heat resistant up to 180°C (dry heat), fast drying and non-yellowing. Resistant to lime, cement, gypsum, smoke gases, industrial atmosphere, salts, weak acids and lyes.

- For inside and outside.
- Heat resistant up to 180°C.
- Light and weather resistant
- Fast drying
- Protects many metals against oxidation
- Spreading rate (m²/l):
1.5-2 m²/400ml

Item No./ Shade	Container size	Carton contents
609-0000 clear	400 ml	4

345

Aqua metal protection**3 in 1: Rust protection, primer and finishing coat**

3 in 1: Metal Protection Lacquer with water-based iron mica. Thick-layer water-soluble Metal Protection Lacquer with active corrosion protection, adjusted thixotropic. With iron mica for a metallic appearance and passive corrosion protection. Rust protection, primer and top coat in one. For all bare or rusted metals indoors and outdoors.

- 3 in 1: Rust protection, primer and finishing coat
- very good weather resistance
- for inside and outside
- resistant to shock, impact and abrasion
- with active corrosion protection
- can be used directly on steel substrates
- Coverage (m²/l): painting/rolling 4-6



Item No./ Shade	Container size	Carton contents
345-9010 white	750 ml	3
345-9005 black	2,5 l	2
345-0701 DB 701		
345-0702 DB 702		
345-0703 DB703		



245

Perlhauch® Aqua Ironwork Lacquer**Weatherproof**

Matt black finish for decorative ironwork. For all exterior and interior ironwork, e.g. decorative ironwork, garden fences, gates, lights, candlesticks, ashtrays, tubular steel furniture, heaters, etc.

- For interior and exterior surfaces
- Shockproof and impact-resistant
- Good weather resistance properties
- Quick-drying
- Spreading rate (m²/l): brush application/roll on: 12-14, spray: 10-12



Item No./ Shade	Container size	Carton contents
245-9005 mattblack	375 ml 750 ml 2,5 l	6 3 2



572

Universal thermo lacquer silver**Heat-resistant up to 650 °C**

Universal Silver Thermal Paint is a high-performance special coating for metal surfaces that combines extreme heat resistance with long-lasting protection. The silicone resin-based formulation is characterized by its impressive temperature tolerance of up to 650°C.

- Heat-resistant up to 650 °C
- Extremely high adhesion
- No loss of adhesion even with shock cooling
- Can be recoated with all high-temperature-resistant silicone resin emulsion paints.
- without harmful lead and chromate compounds
- Spreading rate (m²/l): brush application/roll on: 8-9



Item No./ Shade	Container size	Carton contents
572-9006 White aluminium	750 ml 2,5 l	3 2

METAL PROTECTION LACQUERS

493

Kronen® Zinc Dust Primer



High-quality zinc-rich primer with a zinc content of 90% in dry film. For painting parts of iron and steel structures that are difficult to access, such as weld seams, rivet marks, beads, fittings, etc.; for regalanisation of damaged galvanised sections. Thinning: Special thinner 68

- Cathodic corrosion protection
- Six-month protection against rust without repainting.
- Heat-resistant up to 200°C
- Can be repainted with many different painting systems
- Spreading rate (m²/l):
Brush application/roll on:
approx. 9, Spray: approx. 9

Item No./ Shade	Container size	Carton contents
493-7035 grey	750 ml	6

497

Kronen® Zinc Renovation Spray



For the renovation and colour balancing of aluminum or zinc surfaces, which were damaged through welding, grinding, drillings, transportation, etc. Suitable for gutters, outlet pipes, containers, watering cans, etc.

- For inside and outside
- Very good adhesion
- Light and UV-resistant
- Fast drying
- Spreading rate (m²/l):
1.5-2 m²/400ml

Item No./ Shade	Container size	Carton contents
497-0000 silver	400 ml	4

498

Kronen® Zinc Dust Spray



Zinc dust spray with 99% purity in the zinc proportion Suitable for all irons, like car bodies, exhaust systems, gates, machines, brackets, fences and many more. Highly effective, safe corrosion protection for all bare metals, specifically on welded seams. Heat-resistant up to 600 °C. Suitable for exhaust systems, machines, gates, fences and to protect welded seams.

- Resistant to strongest corrosion
- Cathodic corrosion protection
- For all bare metals
- Very good adhesion
- Heat resistant up to 600°C
- Spreading rate (m²/l):
1.5-2 m²/400ml

Item No./ Shade	Container size	Carton contents
498-0000 grey	400 ml	4

Heat-resistant up to 600°C

571

Blaze-Resistant



Special paint based on silicone resin that is resistant to high temperatures. For iron and steel structures that are exposed to extreme temperatures and severe fluctuations in temperature, such as car exhaust pipes, boilers, chimneys, exhaust gas systems, furnaces, exterior surfaces of grill ovens, etc. Thinning: Special thinner 44. Hardening through curing at 200°C.

- Heat-resistant up to red heat or approx. 600°C
- Extremely good bonding properties
- No bonding loss, even with shock cooling
- Can be topcoated with any high-temperature-resistant silicone resin paint
- Contains no harmful lead or chromate compounds
- Spreading rate (m²/l):
Brush application/roll on:
10-12, Spray: 10-12

Item No./ Shade	Container size	Carton contents
571-9005 mattblack	125 ml	6
	375 ml	6
	750 ml	3
	2,5 l	2

Heat-resistant up to 600°C

POOL COATINGS

780CC

Kronalux® Swimming Pool Paint



Underwater paint for mineral base surfaces. Bright-coloured underwater paint for protective and decorative paint finishes on mineral substrates such as concrete, fibred cement and similar, in swimming pools, paddling pools, fish ponds, fountain basins. Not for painting ships or objects that come into contact with foodstuffs or drinking water. Not resistant to animal and vegetable fats and oils. Thinning: Special thinner 97

- High weather and water resistance properties
- Quick drying
- Resistant to diluted acids and lyes
- Resistant to salt solutions, ozonised and chlorinated water.
- Spreading rate (m²/l):
Brush application/roll on: 8-9



Item No./ Shade	Container size	Carton contents
780-0051 white	750 ml	6
780-0065 capriblue	2,5 l	6
780-0066 pastelblue	10 l	
780-0067 seegreen	30 kg** (BFN)	
780-9005* black		



*Shade black just in 2,5l pot available.
** Just in shade Capri blue (69) available.

786

Kronalux® 2K-GRP-Pool Paint



Underwater paint for decorative painting on waterproof GRP pools. Can also be used for concrete and steel pools with primer. Do not use in drinking water and food areas.

- Adheres to GRP pools without primer
- High weather and water resistance
- Fast drying
- Resistant to dilute acids and alkalis
- Resistant to salt solutions, ozonised and chlorinated water; unused mineral oils
- Spreading rate (m²/kg):
streichen/rollen: 5-7



Item No./ Shade	Container size	Carton contents
786-0800 white	3,5 kg	1
786-0065 capriblue	9 kg	
786-0066 pastelblue		
780-0067 seegreen		
780-9005 black		



787

Kronalux® 2K-Pool-Sealer



2K sealer for GRP pool paint. Underwater paint for transparent protection for decorative painting on waterproof GRP pools.

- Sealer for 786 2K GRP pool paint
- High weather and water resistance
- Fast drying
- Resistant to dilute acids and alkalis
- Resistant to salt solutions, ozonised and chlorinated water; unused mineral oils
- Spreading rate (m²/kg):
streichen/rollen: 6-8



Item No./ Shade	Container size	Carton contents
786-0002 clear	2,5 kg	1

FLOOR AND CONCRETE COATINGS

780

Kronalux® Liquid Plastic



Universal, pigmented floor coating for normal to stressed interiors and outdoor surfaces in the private or commercial area, e.g. floors in private garages, basement rooms, staircases, covered balconies and pergolas, etc. Suitable for coating of concrete, cement screed, eternit, steel, wood and a variety of plastics. We recommend testing the coating of plastics on a test piece.

Thinning: Special thinner 68.

- easy to apply
- scouring-resistant
- resistant to shock, impact and abrasion
- very good adhesion
- resistant to common household chemicals
- high coverage
- for inside and outside
- anti-slip R9
- coverage (m²/l):
painting/rolling: 8-9
spraying: 7-8



Item No./ Shade	Container size	Carton contents
780	750 ml	3
RAL 9010	2,5 l	2
RAL 7001	10 l*	2
RAL 7030		
RAL 7032		
RAL 8017		
RAL 3009		



The universal product for inside and outside!

* 10l container only available in the shades 7001 and 7032.

783

Kronalux® Aqua Fluid Plastic



Universal, pigmented floor paint for normally stressed interior and outdoor surfaces in the private or commercial area, e.g. basement rooms, staircases, covered balconies and pergolas, etc. Suitable for coating of concrete, cement screed, eternit, steel, wood and a variety of plastics. Kronalux® Aqua Fluid Plastic is easy to apply, dries quickly and has good adhesion and coverage.

- water-based
- scheuerbeständig
- resistant to shock, impact and abrasion
- very good adhesion
- resistant to household chemicals
- high coverage
- for inside and outside
- Spreading rate (m²/l):
painting/rolling: 6-8



Item No./ Shade	Container size	Carton contents
783	750 ml	3
RAL 7001	2,5 l	2
RAL 7030		
RAL 7032		



Water-based for inside and outside!

899

Kronalux® 2K-PU-Tile Floor-Coating



Kronalux® 2K-PU-Tile Floor-Coating 899 is a premium two-component catalysed lacquer for stressed tile floor. After a short drying time (24h*) the surfaces are full loadable. The rooms can be reused very quickly. The product is widely stable against water, fuels, deicing salt, diluted liquor, weak acids and cleaner for common households. Thinning: Special thinner 97.

- Fast drying time:
after 24h full loadable*
- Rooms can be reused very quickly
- Very good adhesion - without primer
- Elegant silky-gloss surface
- Skid resistance R9
- No mud clusters in fugues
- Spreading rate (m²/kg):
3 - 4



Item No./ Shade	Container size	Carton contents
899-9010 white	1,1 kg 3,5 kg	1 1



*20°C/55% humidity

**Fast drying time!
After 24h full loadable***



851

Kronisol® Floor Coating



High-quality two-component epoxy lacquer for high-stressed areas. High-quality coating for stressed floors and wall surfaces made of concrete, cement screed and mastic asphalt (only interior rooms), fibre cement, garage sealer. Only somewhat suitable for outdoor usage, because minimal changes to the colour and chalking effects are possible due to UV and weather influences. Mostly resistant to water, petrol and diesel oil, de-icing salt, diluted lyes, weak acids and household cleaners.

- Very high abrasion resistance
- Dirt-resistant
- Easy, straightforward application
- Spreading rate (m²/kg):
brush application/roll on:
4-6



Item No./ Shade	Container size	Carton contents
851-0094 RAL 7032 0095 RAL 7030	5 kg	

862

Kronalit® Colour Epoxy



Two-component, high-performance coating for universal use. For general application on concrete, steel, aluminium, galvanised surfaces and wood. For use on floors exposed to forklift traffic, for machines and devices in industrial environments with high levels of chemical stress, and for all other objects exposed to high chemical and mechanical stress. Thinning: Special thinner 806.

- Resistant to water, and many chemicals.
- Resistant to temperatures between -30°C and +140°C in dry heat, and up to +40°C in humid heat.
- Spreading rate (m²/kg):
Brush application/roll on:
4-6



Item No./ Shade	Container size	Carton contents
862-7001 silver grey	1 kg	1
7032 pebble grey	6 kg	1
9010 white	15 kg	
9005 black		
1023 traffic-light yellow	1 kg	1
	6 kg	1

High-performance coating!

15 kg 8627001:
Discontinued item. Available while stocks last.

853

Kronalux® 2K-PU-Floor Coating



Kronalux® 2K-PU-Floor Coating 853 is a premium two-component catalysed lacquer for stressed surfaces and walls made of concrete, cement and mastic asphalt (for interiors) and fibre cement. After a short drying time (24h*) the surfaces are full loadable. The rooms can be reused very quickly. The product is widely stable against water, fuels, deicing salt, diluted liquor, weak acids and cleaner for common households. Thinning: Special thinner 97.

- For industrial coatings
- Fast drying time:
after 24h full loadable*
- Rooms can be reused very quickly
- For interiors and exteriors
- Extremely high loadable, also with forklift
- Skid resistance R10
- Spreading rate (m²/kg):
2,5 - 4



Item No./ Shade	Container size	Carton contents
853-7030 pebble grey	3,5 kg	1
7032 stone grey	9 kg	1

*bei 20°C/55% r.F.
**Check compatibility/adhesion in advance

Fast drying time!
After 24h full loadable*



Spread with 50 % Kronalux Nachstreumittel 759 as described in the TM.

ANTI-SLIP COATINGS



303

Anti-Slip Spray



Non-Slip Spray 303 is the fast solution for more slip prevention and consequently more safety. In the bath, in the shower tray and wherever there is a risk of slipping. Easy application to surfaces such as tiles, ceramic, natural stone, sanitary acrylic, Gelcoat, enamel. For inside and outside.

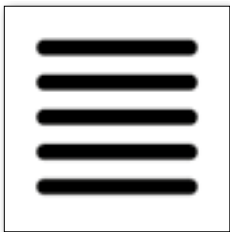
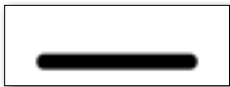
- quick-drying
- Easy application to surfaces such as tiles, ceramic, natural stone, sanitary acrylic, Gelcoat, enamel
- UV-resistant
- Non-slip R10 (DIN 51130)
- Non-slip Class B (DIN 51097)
- for indoor and outdoor
- Spreading rate: ca. 1,5 m²/400 ml Spray



Item No./ Shade	Container size	Carton contents
303-0000	400 ml	6

302

Stencil anti-slip-strips



In addition to the new Non-Slip Spray, we have added two practical stencils to our range. This will allow you to quickly and cleanly apply anti-slip strips wherever more slip resistance is required, e.g. on steps and in shower trays.

- For anti-slip-strips in the width 50 mm
- Stencils for anti-slip-strips on stairs (size: 700 x 250 mm)
- Stencil for 5 anti-slip-strips in shower trays (700 x 700 mm)
- Reusable plastic stencil
- Apply anti-slip-strips quickly and cleanly

Item No./ Shade	Container size	Carton contents
302-0001	Stencil stairs	700x250 mm
302-0002	Stencil shower tray	700x700 mm

306

Aqua anti-slip floor coating



Anti-slip coating for normally stressed areas such as basements, storage rooms, stairs and outdoor areas. Suitable for concrete, cement screed, asphalt and wood that are to be made slip-resistant.

- tested slip resistance R10
- for inside and outside
- light and weather resistant
- resistant to shock, impact and abrasion
- very good adhesion
- resistant to household chemicals
- Spreading rate:



Item No./ Shade	Container size	Carton contents
306-7001 silver-grey	2,5 l	2
306-7030 stone grey		
306-7032 pebble grey		



ANTI-GRAFFITI-SYSTEM

470

Graffiti remover

new



Facade cleaning made easy! Whether paint graffiti, colour graffiti or felt-tip graffiti - with our innovative cleaner, unwanted graffiti and street art motifs can be removed quickly and effortlessly from solvent-resistant façades and surfaces.

- Biodegradable
- Short exposure time
- Tailored to anti graffiti protective coatings



Item No./ Shade	Container size	Carton contents
470-0000	1000 ml	4

471

Anti-graffiti protective coating

new



Temporary colourless protective coating against graffiti. Our colourless protective coating against graffiti and unwanted façade paintings is suitable for absorbent surfaces and dirt-sensitive substrates such as plaster, clinker, wood, natural stone, etc.

- Protects against the ingress penetration of water and dirt into the substrate
- Open to diffusion and paintable
- Matt surface
- Ergiebigkeit (m²/l):
Brush application/roll on: ca. 11
spraying: ca. 9



Item No./ Shade	Container size	Carton contents
471-0004	750 ml	3
	2,5 l	2

472

2K-Anti-graffiti protective coating

new



The permanently reliable graffiti protection coating. Our permanent anti-graffiti protection is a durable protective coating for absorbent and non-absorbent façades and substrates. The coating protects surfaces and properties from unwanted graffiti and façade paintings.

- Protects substrates from the penetration of water, dirt and colour
- Paintable
- Water-dilutable
- Silicone and wax-free
- Spreading rate (m²/l):
Brush application/roll on: ca. 11
spraying: ca. 9



Item No./ Shade	Container size	Carton contents
472-0002 Silk gloss 472-0004 Matt	2,5 l	1



MARKING PAINTS

380

Aqualine Marking Paint



The aqueous for interior and exterior

Water-thinnable marking paint, environment-friendly. For reflective and non-reflective markings in interior and exterior areas, on concrete, asphalt and paving stones. Enhanced reflective properties during the day, in conjunction with full long-distance reflection at night can be achieved by mixing in Kronalux® Aggregate 759.

- For interior and exterior applications
- Quick drying
- Good resistance
- Excellent build and opacity
- Spreading rate (m²/l):
Brush application/roll on: 2-3
Spray: 2-3



Scan here for the video



Item No./ Shade	Container size	Carton contents
380-9010 white	750 ml	3
380-1023 yellow	2,5 l	2
380-9005 black	10 l	
380-3000 red		
380-6018 green		
380-5012 blue		



752

Kronalux® Marking Paint



32

Plastic marking paint with smooth surface. Kronalux® Marking Paint 752 is suitable for reflective and non-reflective markings on concrete, asphalt and setts. Primarily suited for industrial marking applications, in interior areas also, owing to the product's smooth surface (in comparison with Kronalux® Road Marking Paint HS 750). The addition of Kronalux® Aggregate 759 offers enhanced traffic safety characteristics and this also increases the abrasion resistance. Thinning: Special thinner 755.

- For interior and exterior applications
- Very quick drying
- Good opacity
- High abrasion resistance
- Low saponification properties
- Airless spray application possible
- Spreading rate (m²/l):
Brush application/roll on: 2-3, Spray: 2-3



Scan here for the video



Item No./ Shade	Container size	Carton contents
752-9010 white	750 ml	6
752-1023 yellow	2,5 l	6
752-9005 black*	10 l	
752-2009 orange		
752-3000 red	750 ml	3
752-6018 green	2,5 l	2
752-5012 blue		



* Colour black only available with the following carton contents: 750 ml: 3 | 2,5 l: 2

High-performance paint for interior and exterior applications

758

Kronalux® Luminous spray



Special lacquer with light-storing pigments. Universally applicable indoors and outdoors. For marking luminescent safety markings on walls and floors as well as steps. Can also be used for the decorative design of starry skies, light switches, etc.

- for indoors and outdoors
- Luminance class C according to DIN 67510-1
- Luminosity increases with the applied layer thickness
- light and weather resistant
- Fast drying
- Spreading rate: ca. 1 m²/400ml can



Item No./ Shade	Container size	Carton contents
758-0000 transparent light yellow green	400 ml	6



750

Kronalux® Road Marking Paint HS

High-solid road marking paint with BAST-No.: 2001 DS 07.09 (400µm) for the shade white. For road markings on heavily used road surfaces of concrete, asphalt and setts; for motorways, regional highways and city road markings; for runway markings in airports; for mandatory signs and guidelines on track systems, direction arrows, pedestrian (zebra) crossings, car parks and kerb markings. Thinning: Special thinner 75.

Für extremen Außeneinsatz!

- Super-quick drying
- Minimum disruption of traffic
- High abrasion resistance
- on concrete, asphalt, setts
- Extremely good visibility at night
- Also suitable for use on motorways and in airports
- Spreading rate (m²/l):
Brush application/roll on:
2–3



Item No./ Shade	Container size	Carton contents
750-9010 weiß	750 ml	6
750-1023 gelb	2,5 l 10 l 37 kg*	6

* 37 kg container only available in white.

757

Kronalux® 2K-PU-Industry Marking Paint

Kronalux® 2K-PU-Industry Marking Paint 757 was developed for industrial Markings with maximum load. After a short drying time (24h*) the surfaces are full loadable. The rooms can be reused very quickly. The product is suitable with interiors and exteriors. The mud insensitive surface is softer stable and therefor optimally suitable for garage soil. Thinning: Special thinner 97

**Fast drying time!
After 24h full loadable***

- For industrial markings with maximum load
Fast drying time/
after 24h full loadable*
Mud insensitive surface
For exterior markings and all-over markings
- Spreading rate (m²/kg):
Brush application/roll on:
4-5



Item No./ Shade	Container size	Carton contents
757-9010 white	1,1 kg	1
757-1023 yellow	3,5 kg	1
757-3000 red		
757-5012 blue		
757-6018 green		
757-9005 black		

*20°C/55% humidity

357

Kronalux® 2K-Aqua-Industry Marking Paint

Kronalux® 2K-Aqua-Industry Marking Paint was specially developed for heavy-duty industrial markings. Ideal for sensitive areas that need to be highly resilient again quickly (food industry, storage areas, floors with forklift traffic). Can be used universally on concrete, screed, floor coatings. Suitable for indoor and outdoor areas.

**Fast drying time!
After 24h full loadable***

- Extremely fast drying time!
- Low odour and low emission
- Solvent-free
- High mechanical resilient
- Suitable for forklift traffic
- Very good resistance properties
- Spreading rate (m²/kg):
Brush application/roll on:
4-5



Item No./ Shade	Container size	Carton contents
357-9010 white	1,1 kg	1
357-1023 yellow	3,5 kg	1
357-3000 red		
357-5012 blue		
357-6018 green		
357-9005 black		

*20°C/55% humidity

MARKING PAINTS

753

Kronalux® Marking Spray



Plastic marking spray for quick and efficient marking work on interior or exterior surfaces. Application with hand-held marking device or marking trolley, line width 80–120 mm.

Contains no toluene, lead or chlorinated solvents.

- For interior and exterior applications
- Very quick drying
- Good opacity
- High abrasion resistance
- Low saponification properties
- Spreading rate:
At 10 mm line width:
approx. 30-35 m/750 ml



Item No./ Shade	Container size	Carton contents
753-9010 white	750 ml	6
753-1023 yellow		
753-3000 red		
753-5012 blue		
753-9005 black		



Hohe Abriebfestigkeit

756

Kronalux® Line Marking Spray



Kronalux® line marking spray for marking on concrete, asphalt and plaster indoors and outdoors. Weather-resistant, stain-resistant, well covering and fast drying. Spray jet width (5-10 cm) can be adjusted through spray distance.

Does not contain toluene, no lead and no bleached solvents.

- For inside and outside
- Very fast drying
- High coverage
- Hardly saponifiable
- Spreading rate:
with 100 mm line with:
approx. 30-35 lfm/750ml



Item No./ Shade	Container size	Carton contents
756-9010 white	750 ml	6
756-1003 yellow		



Für rationelle Markierungen

761

Kronalux® 2K-PU Industrial marking spray



Kronalux® 2K-PU-Industry-Marking-Spray 761 was developed for industrial Markings with maximum load. After a short drying time (24h*) the surfaces are full loadable. The rooms can be reused very quickly. The product is suitable with interiors and exteriors. The mud insensitive surface is softer stable and therefor optimally suitable for garage soil.

- For industrial markings with maximum load
- Fast drying time/
after 24h full loadable*
- Mud insensitive surface
- For exterior markings and all-over markings
- Spreading rate (m²/l):
ca. 25 lfm/500ml case



Item No./ Shade	Container size	Carton contents
761-9010 white	500 ml	6
761-1023 yellow		
761-3000 red		
761-5012 blue		



Für Hochleistungsmarkierungen



760

Marking Stencils



All important traffic and warning signs, markings for no-parking zones and handicap spaces along with letters and numbers are available. The reusable helpers are made of stable, 1 mm thick plastic.

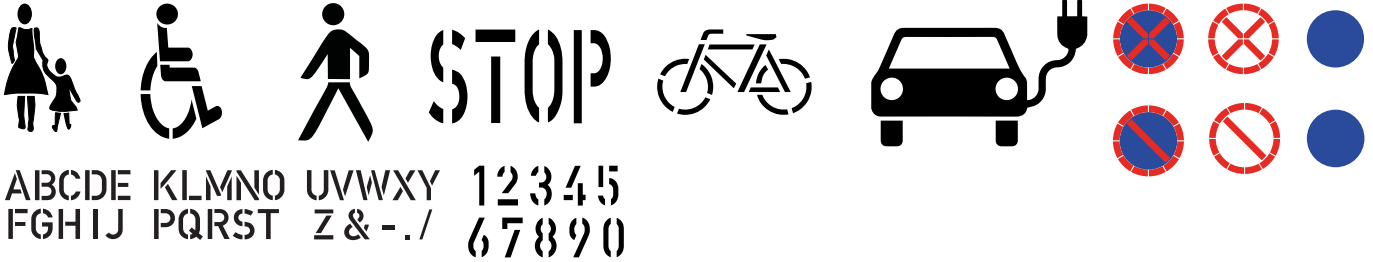
- Individual models possible
- From 1 mm thick plastic
- Reusable
- All important traffic and warning signs
- Parking forbidden, handicap parking space and a lot more
- Letters and numbers



Item No./ Shade	Container size	Carton contents
7600001	FUSSGÄNGER	427 x 724 mm
7600002	BEHINDERTENPARKPLATZ	390 x 648 mm
7600004	STOP	820 x 420 mm
7600008	RADFAHRER	763 x 422 mm
7600009	Ziffern 1-5 und 6-0	H = 230 mm
7600010	HALTEVERBOT	Ø 600 mm
7600011	EINGESCHRÄNKTES HALTEVERBOT	Ø 600 mm
7600012	BUCHSTABEN A-Z	pro Buchstabe 100 x 230 mm
7600013	PARKPLATZLINIE	100 x 2500 mm
7600014	FUSSGÄNGER INDUSTRIE	427 x 724 mm
7600015	PARKPLATZ E-AUTO	800 x 540 mm



Stencil for parking mark.
Line broadness: 10cm, length: 250cm.



ABCDE KLMNO UVWXY 12345
FGHIJ PQRST Z & -./ 67890

759

Kronalux® Aggregate



Aggregate (including anti-skid aggregate and reflective beads) for mixing with 380 Aqualine Marking Paint, 752 Kronalux® Marking Paint and 750 Kronalux® Road Marking Paint HS. The addition of aggregate to JAEGER marking paints significantly improves anti-skid characteristics, reflective properties and the traffic safety properties of the marking paint.

- increases the grip and road safety of the marking
- increases the reflective effect
- required for public roads in combination with 750 HS, white
- Addition rate: 50 % spreading agent to 100 %. Marking paint



Item No./ Shade	Container size	Carton contents
759-0000	1 kg 5 kg 25 kg	

763

Kronalux® 2K-Rolling plastic



2K-Rolling plastik is a solvent-free two-component cold plastic based on acrylic polymers. Kronalux® 2K-Rolling plastik is especially suitable for the production of surface markings with slightly structured and non-slip surfaces.

- For full-surface markings also on asphalt
- Slip resistance due to material with good grip
- Excellent day and night and night visibility - even even in wet conditions!
- For very durable markings
- Easy to apply
- Verbrauch: ca. 3 kg/m² bei 1,8 mm



Item No./ Shade	Container size	Carton contents
763-0800 weiß 763-0009 transparente Base tönbar nach RAL	12 kg 15 kg	

MARKING PAINTS

753

Marking Applicator/Trolley



Versatile marking applicator for marking spray 753, 756 and 761. Sturdy steel construction with 4 wheels and a direction arrow. Handle installation possible for right and left hand operation. Also appropriate for double sided edge markings. Spray process possible with one or two cans. Variable line width: 50-120 mm

- Gradually adjustable line width
- Robust sheet metal construction
- Direction arrow for precise marking
- Suitable with double sided edge markings

Item No./ Shade	Container size	Carton contents
753-MARK 1	1 pc.	

202

Spraymaster II - Hand Marker



Hand marker for marking spray 753 and 756. Spray help for the comfortable application of Jaeger marking spray 753 and 756. Professional alternative to the spraying pistol.

- Simple, but effective handling
- Simple triggering function
- Exact positioning and guiding possible
- Protects the operator's hands

Item No./ Shade	Container size	Carton contents
202-0000	1 pc.	

762

Airless Marking wagon



Perfect for economical marking of small to medium sized areas such as car park markings, zebra crossings, traffic and information signs using marking stencils. Gun can be placed on the right or left.

- High area efficiency
- Perfect spray pattern: sharp edges
- Short set-up times
- Durable diaphragm pump
- Very easy to maintain
- Fast cleaning
- Little pre-run material
- Fast colour change

Item No./ Shade	Container size	Carton contents
762-0000	1 pc.	

764

Battery-powered Airless Marking wagon



In combination with our marking paints, the battery-powered airless marking trolley offers an unbeatable solution for economical marking indoors and outdoors. Whether for classic applications such as car park and parking space markings, zebra crossings and traffic signs using marking stencils or for floor markings in warehouses, logistics and industrial halls - it is even ideally suited for sensitive areas such as the food industry.

- Reliable and durable Honda eGX engine
- Quiet operation & clear reduced vibration
- Removable Li-Ion Rechargeable battery: rechargeable <60 min.
- High space efficiency
- Perfect spray pattern: Sharp edge boundary
- Fast colour change

Item No./ Shade	Container size	Carton contents
764-0000	1 St.	

SPECIAL PROTECTION LACQUERS

305

Aqua Sun Protection Lacquer



Water-thinnable protection lacquer against the effects of light and heat. For shed roofs, glass roofs, greenhouses, glass domes and boards made from polycarbonate, plexiglas® or polystyrene. Produces even, diffuse and glare-free light in the interior space.

- Quick drying
- Weather-resistant
- Good wet bonding properties
- Good resistance to the effect of light
- Reduces the interior temperature and the amount of UV irradiation
- Spreading rate (m²/l):
Brush application/roll on: 7-9



Item No./ Shade	Container size	Carton contents
305-9010 white glazing	2,5 l 10 l	2

392

Kronen® Aqua Strip Lacquer



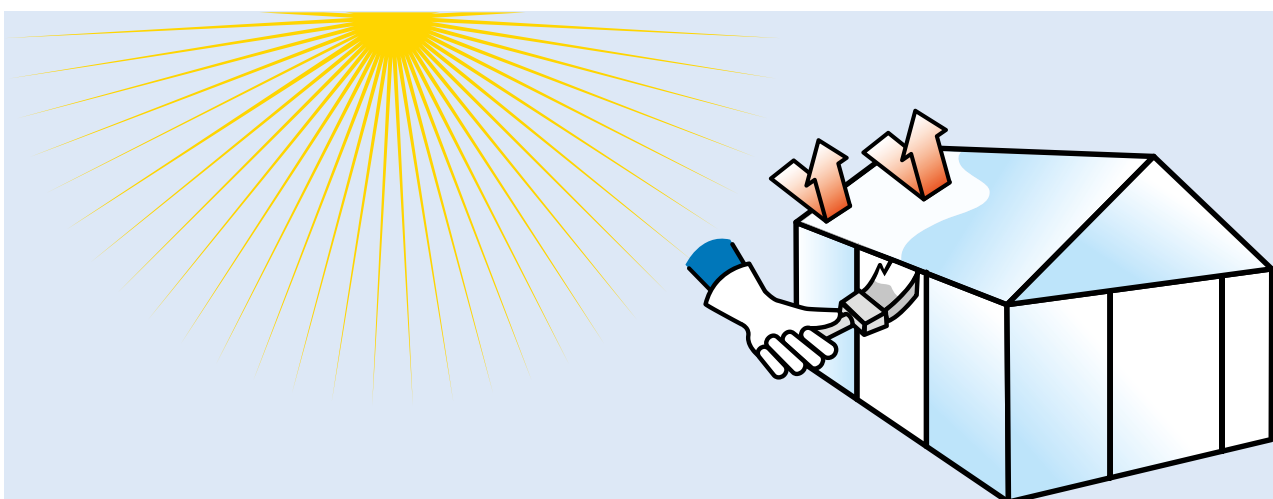
Strip lacquer for smooth, non-absorbing surfaces. To cover metal parts that are not painted, like hinges, windows and door handles, machine parts, etc. made of iron, aluminum, copper, brass, but also for enamelled areas or glass, etc.; in order to protect against contaminations and light mechanical influences.

- Quick drying resistant against water, diluted acids, lyes, steam, limestone and cement sprayer.
- Easy to strip, also after painting with different lacquer.
- Spreading rate (m²/l):
painting/rolling: 5-6



Item No./ Shade	Container size	Carton contents
392-0000 blue glazing	750 ml 2,5 l	3 2

Water based



THINNERS/ CLEANING AGENTS

42

Special Thinner



For Kronen® Stain Insulating White HS 123,, Kronen® Renovation Paint 423, Kronen® Aqua Renovation Paint 425, Kronen® Antimould-renovating paint 426.

Item No./ Shade	Container size	Carton contents
042-0000	1 l	6
	2,5 l	4

44

Special Thinner



For Jaeger Multi-primer 715, Blaze-resistant 571.

Item No./ Shade	Container size	Carton contents
044-0000	1 l	6
	2,5 l	4

68

Special Thinner



For Sinolin® Heating Unit Laquer 277 Kronen® Exquisite 695, Jaeger Zinc Dust Primer 493, Kronalux® Plastic 780.

Item No./ Shade	Container size	Carton contents
068-0000	1 l	6
	2,5 l	4

97

Special Thinner



For Kronalux® Swimming Pool Paint, Kronalux® 2K-PU-Industry Marking Paint 757, Kronalux® 2K-PU-Floor Coating 853, Kronalux® 2K-PU-Tile Floor- Coating 899.

Item No./ Shade	Container size	Carton contents
097-0000	1 l	6
	2,5 l	4

755

Special Thinner



For Kronalux® Marking Paints 752.

Item No./ Shade	Container size	Carton contents
755-0000	1 l	6
	2,5 l	4
	10 l	

806

Special Thinner



For Kronalit® Primer 819, Kronalit® Colour Epoxy 862

Item No./ Shade	Container size	Carton contents
806-0000	1 l	6
	2,5 l	4

75

Special Cleaning Agent



Thinning for Kronalux® Road Marking Paint HS 750. For cleaning marking devices.

Item No./ Shade	Container size	Carton contents
075-0000	2,5 l	4
	10 l	

80

Special Cleaning Agent



Highly efficient industrial cleaner for removing oil, fat, rust and other forms of heavy soiling. Can be diluted with water as required. Biodegradable in accordance with DIN 29888.

- solvent free
- highly effective
- removes the strongest stains

Item No./ Shade	Container size	Carton contents
080-0000	5 l	

884

Jaeger Decalcifier - Citric Acid



Citric acid for slightly etching and cleaning of mineral surfaces for the preparation of subsequent coatings. After the application, rinse thoroughly with water. Protect acid-sensitive objects

- for slightly roughening of smooth surfaces

Item No./ Shade	Container size	Carton contents
884-0000	400 g	

FILLERS

415

2K-PE Fiber Surface Filling



2K polyester surface filling on the basis of highly-reactive polyester resins. As repair surface filling on concrete, metal, wood and many plastics, bridged holes (also rust holes), for mechanically stressed areas. Very good adhesion, fast drying, easily grindable, elastic filling compound.

- very good adhesion
- fast drying
- easily grindable
- elastic filling compound



Item No./ Shade	Container size	Carton contents
415-0000 light grey	250 g 1000 g	6 6
separate hardener 418-000H	25 g	

Grinding is possible after 20 min.

418

2K-PE Filling Putty



2K polyester putty on the basis of highly-reactive polyester resin, free of asbestos. Filler and stopper on metal, wood, concrete, to fill cavities and unevenness, can be used for repair and restoration work, also for the fastening of screws or plugs. Very good adhesion, fast drying, easily grindable. Good stability also on vertical surfaces, can also be applied in thick layers.

- Very good adhesion
- Fast drying
- Easily grindable
- Can also be applied in thick layers
- Suitable for metal, wood and concrete



Item No./ Shade	Container size	Carton contents
418-0007 white	250 g 1000 g	6 6
separate hardener 418-000H	25 g	

Suitable for metal, wood, concrete!

419

2K-PE Fine Putty



2K polyester putty on the basis of highly-reactive polyester resin, free of asbestos. Fine putty on metal, wood or concrete, on surfaces pre-treated with Jaeger 2K-PE filler 418, to fill small cavities and unevenness, can be used for repair and restoration work, also for the fastening of screws or plugs. Very good adhesion, fast drying, easily sandable. Results in very smooth surfaces.

- Very good adhesion
- Fast drying
- Easily sandable
- Can also be applied in thick layers
- Suitable for metal, wood and concrete



Item No./ Shade	Container size	Carton contents
419-0007 white	250 g 1000 g	6 6
separate hardener 418-000H	25 g	

Suitable for metal, wood, concrete!

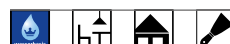
421

Acrylic Rapid Filler



The product for spot and planar priming. Fast drying, particularly fine-grained filler on a water basis, for wood and metal, for indoors and outdoors. Dries quickly. Creates a very smooth surface and can be applied in thin layers as needed.

- Usable as a spot and surface filler
- On a water basis
- Extremely fine-grained
- For wood and metal
- For inside and outside



Item No./ Shade	Container size	Carton contents
421-0000 white	400 g Tube 1,3 kg Tube 540 g Cartridge	12 12 12

2 in 1: stain and surface filler

412

Kronalit® Synthetic Resin Filler



Surface filling for smoothing, filling and repairing porous substrates, holes and cracks, for preparing indoor and outdoor painting work. Suitable for all kinds of painting work on primed wood and metal.

- can be processed easily and smoothly
- usable as a spot and surface filler
- quick-drying
- easily grindable
- for wood and primed metal
- for inside and outside

Item No./ Shade	Container size	Carton contents
412-0000 white	400 g 800 g 2,5 kg	12 12 6

414

Kronalit® Painter's Surface Filling



Quick-drying, white painter's filling, water-based, solvent-free. Kronalit Painter's Surface Filling 414 is an excellent filler for all painting and finishing applications. It is particularly suitable for smoothing, filling and repairing damage to wood and metals (primed) and is ideal to remove the pores from wood.

- for inside and outside
- fast drying
- fast paint-over ability
- several thin layers can be applied in a short period of time
- water-based
- easily grindable
- easy handling
- odour-free
- low desiccation

Item No./ Shade	Container size	Carton contents
414-0000 white	400 g 800 g	12 12

Dries quickly. Easily grindable.

422

Kronen® Universal Surface Filling



Kronen® Universal Surface Filling is a quick-drying synthetic resin filler with elastic properties. It is particularly suitable for filling, smoothing and patching. Application of the Universal Surface Filling is easy and smooth. It can be perfectly applied in several layers and also can be grinded well.

- usable as a stain and surface filler
- fast drying, can be applied several times in a layers
- elastic film
- low desiccation
- easily grindable
- for inside and outside

Item No./ Shade	Container size	Carton contents
422-0000 white	250 g	12

Dries quickly. Easily grindable.



ROOF PROTECTION

626

Aqua Roof and Gutter Paint



Aqua Roof and Gutter Paint has been specifically developed for the renovation of gutters and weathered roof surfaces, e.g. on garages, carports, garden and equipment sheds, stalls for small animals. Adheres to many conventional surfaces, such as roofing membrane, brass, steel, copper, weathered hot-dip galvanising, weathered spray-on galvanising, hard PVC, concrete and fibre cement. Aqua Roof and Gutter Paint is weather-resistant and resistant to UV light.

- does not drip or splash
- very easy handling
- weather-resistant and UV-resistant
- permanently elastic
- on a water basis
- for painting over waterproof
- passive corrosion protection through micaceous iron ore
- outstanding adhesion
- Spreading rate (m²/l):
brush application/roll on:
4-5

Item No./ Shade	Container size	Carton contents
626-0707 anthracite	2,5 l	4
626-7033 cement grey*	5 l	1
626-0802 redbrown		
626-7001 silvergrey		
626-9010 white		



*Discontinued item. Available while stocks last.

Professional product for roof surfaces and gutters

620

Jungkeit Waterproof



Permanently elastic sealing compound reinforced with dralon fibres. To repair damaged joints, cracks and holes anywhere on the roof surface, for example on chimneys, drain pipes, roof lights, skylights, gutters, etc.

- Water-resistant, elastic and fibre-reinforced sealing compound
- Immediate and long-lasting seal even against rain or frost
- Can cover cracks of up to 1 cm
- Spreading rate (m²/l):
Brush application/roll on:
0.5

Item No./ Shade	Container size	Carton contents
620-7001 light grey	375 ml	12
	750 ml	6
	4 l	4

Sealing compound for punctual use!

619

Aqua Roof Primer



For priming highly absorbant surfaces on roofs made of fibre cement. Regulates the absorbancy and creates a stable surface for additional coating.

- good penetration depth
- regulates the absorbancy and strengthens the surface
- Base for coats with Aqua Roof and Gutter Paint
- Spreading rate (m²/l):
Brush application/roll on:
5

Item No./ Shade	Container size	Carton contents
619-6000 green glaze	750 ml*	3
	2,5 l	2

*Discontinued item. Available while stocks last.



RUST PROTECTION RANGE CAR

510

LÖWE Auto-Rust-Primer



Corrosion protection primer for all cars, commercial vehicles, construction machinery, steel structures, cast iron surfaces, etc. Alkyd resin primer, low aromatic content. Air-drying one-part primer, can be applied directly onto residual rust (without rust covering primer).

- Good sandability
- Air-drying one-component primer
- Good build and bonding properties
- Resistant to heat up to 120°C.
- Can be repainted with many different painting systems (nitro-resistant)
- Spreading rate (m²/l):
Brush application/roll on: 10-12, Spray: 7-9



Item No./ Shade	Container size	Carton contents
510-7001 grey	375 ml	6
510-8012 redbrown	750 ml	6
510-9005 black	2,5 l	6



511

LÖWE Auto-Rust-Primer Spray



Corrosion protection primer for all cars, commercial vehicles, construction machinery, steel structures, cast iron surfaces, etc. Uses and properties as for LÖWE Auto Rust Primer 510.

- Good sandability
- Good build and adhesion
- High spreading rate
- Resistant to heat up to 120°C.
- Can be repainted with many different painting systems (nitro-resistant)
- Spreading rate: 1,5-2 m²/400 ml spray



Item No./ Shade	Container size	Carton contents
511-7001 grey	400 ml	12



563

LÖWE Rust-Primer Plus



Thick-film corrosion protection, filler and primer for machines, commercial vehicles, construction machinery, steel structures, cast iron, etc. Alkyd resin primer with low aromatic content.

- Extremely good weather resistance
- Optimum rust protection without opaque coat
- Excellent build
- Perfect rust protection in a single coat
- Spreading rate (m²/l):
Brush application/roll on: 6-8 Spray: 6-8



Item No./ Shade	Container size	Carton contents
563-7001 grey	375 ml	6
563-8012 redbrown	750 ml	6
563-9005 black	2,5 l	6
563-9010 white		



ACCESSORIES

200

Spraymaster



For clean and efficient operations with all Jaeger spray cans, except for marking spray 753, 756 und 761. This spray accessory allows professional control of spray cans, similar to using a spray gun. For convenient painting of larger areas and places that are difficult to access.

- Professional alternative to a spray gun
- Protects the operator's hands
- Convenient spray accessory

Item No./ Shade	Container size	Carton contents
200-0000 Black plastic	Pc.	

VILLA VENEZIA CREATIVE TECHNIQUES

309

Iso-Mineral Primer



Iso-mineral primer is a universal adhesive coat for all decorative painting techniques. For inside and outside. Jaeger Iso-mineral primer improves the adhesion, insulates stains and wood contents and makes it easier to apply a filler coat. In particular for the surface pre-treatment for Stucco Romano, Epoca Marble, Antiqua lime plaster, Stucco Fondo, Stucco Veneziano and Jaeger Fresco Veneziano.

- Fast drying
- Extremely good adhesion
- Water borne
- Insulated stains and wood contents
- Spreading rate (m²/kg): approx. 0.2 kg/m²

Item No./ Shade	Container size	Carton contents
309-0800 white	5 kg 25 kg	



960

Stucco Fondo



Priming filler for smoothing and marbling techniques. Jaeger Stucco Fondo is a fine putty to prepare substrates for especially high-grade smoothing and marbling techniques, in particular for Jaeger Stucco Veneziano and other quality paint techniques.

- Covers well
- Easy to sand
- Does not crack
- Non-flammable
- Environment-friendly
- Consumption: depending on layer thickness per layer: approx. 0.4 kg/m²

Item No./ Shade	Container size	Carton contents
960-0000 white 960-0... Shade Select one of the wide range of available shades	5 kg 25 kg	



965 Fresco Veneziano



961

Stucco Veneziano



Smooth and glossy finish stopper for original-style Venetian smoothing techniques like porcelain-smooth surfaces. For highly creative techniques, such as smooth finish stopping in the traditional style of stucco lustro and marble painting.

- Polishable
- An effect like marble
- Does not crack
- Non-flammable
- Contains marble powder
- Consumption: depending on layer thickness per layer: approx. 0.2 kg/m²

Item No./ Shade	Container size	Carton contents
961-0800 white	5 kg	
961-0... Shade code		
Select one of the 80 available shades		



For superior smoothing techniques!



Scan here for the video

965

Fresco Veneziano



Mineral smooth finish stopper for lime pressing and antique techniques. Suitable for high-grade smoothed painting in the traditional style of frescos, for smoothing and marbling techniques on facades and rough-wearing interior surfaces. In combination with Jaeger Antiqua, it produces smooth surfaces with a patina effect (antique technique).

- From natural slaked lime
- Polishable smooth-finish plaster
- Diffuses water vapour
- With high-grade marble powder
- Non-flammable
- Consumption: depending on layer thickness per layer: approx. 0.4 kg/m²

Item No./ Shade	Container size	Carton contents
965-0031 white	5 kg	
965-0... Shade	15 kg	
Select one of the wide range of available shades		



For lime pressing techniques!

961 Stucco Veneziano



VILLA VENEZIA CREATIVE TECHNIQUES

929

Sabbia



Decorative finishing coat with fine metalised sand grain structure on an aqueous basis. Jaeger Sabbia is suitable for the finish of all decorative surfaces of interior rooms. The structure of the surface can be designed individually through application of the brush and this results in completely brilliant optics.

- brilliant surface
- solvent-free
- water soluble
- easy to apply
- noble metal surface with fine sandy structure
- Coverage: approx. 8 m²/l



Item No./ Shade	Container size	Carton contents
929-0700 gold	1 l	
929-0701 silver		
929-0704 copper		

Decorative metallic effect coverage with sandy structure



Scan here for the video

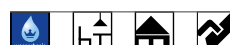
968

Antiqua – Lime Plasterwork



Mineral external fine plaster; Jaeger Antiqua provides the perfect finish, for example, on historic buildings or with modern architecture. Jaeger Antiqua is also ideally suited as a painting surface for cloudy surfaces and scumbling effects. Likewise, it is easy to produce traditional sgraffito, relief and fresco techniques with Jaeger Antiqua.

- From natural slaked lime
- Diffuses water vapour (DIN 53122)
- Alkali-resistant
- Weather-resistant
- Provides good natural resistance to mould formation
- For interior applications
- Spreading rate (m²/kg): Depending on the layer thickness for each surface: 1–1.3



Item No./ Shade	Container size	Carton contents
968-0000 weiß	10 kg	
968-0... Shade code	25 kg	
Select from countless shades from the shade cards		



Scan here for the video

939 Stucco Romano

929 Sabbia



939

Stucco Romano



Creative wall design is trend: with Jaeger Stucco Romano, a dispersion-bound, decorative fine plaster, you can now rationally decorative smoothing techniques. For high-quality, porcelain smooth surfaces in the style of the original Venetian smoothing techniques. Application: 1 x iso-mineral primer (sanded), 2 x Stucco Romano.

- Water vapour permeable
- With marble-like light effect
- Mineral pigmented
- Spreading rate (m²/kg): depending on the layer thickness per layer: 0.2 kg/m²

Item No./ Shade	Container size	Carton contents
939-0800 white 939-0... Shade code Select from countless shades from the shade cards	5 kg	



Scan here for the video

Smoothing technique in just 2 steps!

949

Epoca Marmor



With Jaeger Epoca marble, a modern lime pressing technique is obtained on the basis of high-quality, mature lime putty with mineral pigments. A natural, marble-like effect can be achieved in just two layers. The mineral, satin surface provides for a typical Mediterranean ambiance. Depending on the handling, the surface may be designed as matte or satin. When reworking with antique soap, a marble-like gloss can be achieved as well (antique technology).

- With natural seasoned slaked lime
- Rational and easy to apply
- Does not rip
- Inflammable
- Breathing surface
- Very good water vapour diffusion ($S_d=0.04$ m)
- Spreading rate (m²/kg): depending on the layer thickness per layer: approx. 0.5 kg/m²

Item No./ Shade	Container size	Carton contents
949-0800 white 949-0... Shade code Select from countless shades from the shade cards	5 kg 10 kg	



Scan here for the video

949 Betonoptik mit Epoca Marmor



VILLA VENEZIA CREATIVE TECHNIQUES

926

Copper patina



Copper surfaces match the industrial design excellently, particularly if they have a patina with the typical verdigris. The copper patina works similarly to the real rust: The copper-red primer is made to react with an activator, the verdigris already appears after approx. 30 minutes.

- Decorative appearance
- real copper patina
- individual design options
- easy to apply
- Spreading rate: ca. 8 - 12 m²/l



Item No./ Shade	Container size	Carton contents
926-0000 primary color	1 l	1
926-000A activator	500ml	1

986

Real Rust



Rusty surfaces are essential for the industrial style. Now, real rust can be created quickly, easily and particularly, in a targeted manner: The primer, which is provided with iron particles, is oxidised using a separately supplied activator. The strength of the effect can be controlled by the application method of the activator. Then, the surface can be protected from discoloration with a protective coating.

- Decorative appearance
- real rust surface
- individual design options
- easy to apply
- Spreading rate: ca. 3 - 6 m²/l



Item No./ Shade	Container size	Carton contents
986-0000 primary color	1 l	1
986-000A activator	250 ml	2

925

Genuine Rust Sealer



Colourless sealant for genuine rust and copper patina. Protection against staining and sealing of decorative wall coating techniques such as genuine rust and copper patina.

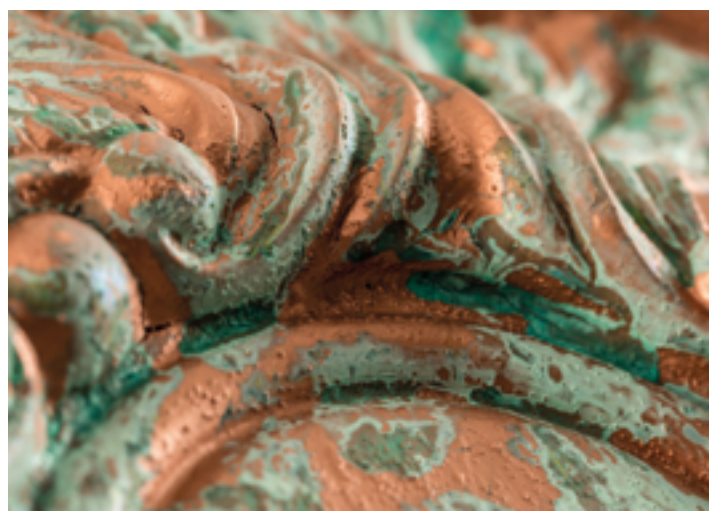
- easy to apply
- good abrasion resistance
- low grain
- for inside and outside
- matte surface
- Coverage: approx. ca. 8 - 10 m²/l



Item No./ Shade	Container size	Carton contents
925-0000 clear matt	750 ml	3

986 Real-Rust

926 Copper patina



927

Calce Argilla



Focus Open 2019
Special Mention

The innovative lime-loam plaster, Calce Argilla, has a high loam content with integrate cellulose fibres, due to which higher layer thicknesses can be created. This way, the material can be structured wonderfully, so that individual surfaces can also be created here, which have apparently aged for decades. The material combination, with fine marble and natural sands, is ready to apply and can be applied very straightforwardly and undiluted.

- mineral base lime/loam
- ensures good room climate
- prevents mould formation naturally
- highly steam diffusible
- can be dyed with Jaeger mineral paint concentrate 964 (up to 5%)
- Spreading rate: 0,4 - 0,6 m²/kg for both layers

Item No./ Shade	Container size	Carton contents
927-0800 white	20 kg	

928

Vesuvio



A wonderful addition to the rough rust or copper surfaces is the new Vesuvio smoothing rendering, refined with metallic pigments, which ensures silk matt surfaces with fascinating light effects. Five attractive colours offer many combination options. But the ready-to-apply smoothing technique is recommended also as a large-format wall covering in the upscale property segment. It is applied in two layers, the top coat can be structured with a paintbrush or trowel.

- Exquisite, silk matt appearance
- easy to apply
- fascinating play of light with metallic pigments
- Spreading rate: 8-10 m²/ltr for both layers

Item No./ Shade	Container size	Carton contents
928-0321 Volla red-brown-metallic	1 l	
928-0305 Acera grey-metallic		
928-0314 Cassili anthracite-metallic		
928-0313 Saviano copper-metallic		
928-0303 Ottaviano silver-orange-metallic		

928 Vesuvio



VILLA VENEZIA CREATIVE TECHNIQUES

951

Creative stencils



The stencil motifs create individual surfaces in the chabby style, which seem to have aged in dignity over decades. The healthy-living lime-loam plaster 927 Calce Argilla, has a high loam content with integrated cellulose fibres. This enables higher layer thicknesses, and the material can be beautifully structured.

- Plastic stencil
- reusable
- 5 attractive motifs

Item No./ Shade	Container size	Carton contents
9510100 Italia	70x100 cm	
9510200 India	50x70 cm	
9510300 Oriental	50x70 cm	
9510400 Arabic	50x70 cm	
9510500 Africa	58x58 cm	
9510600 Marocco	53x79 cm	
9510700 Galizia	53 x79 cm	
9510800 Andalusia	53 x79 cm	
9510900 Katalania	53 x79 cm	
9511000 Industrial	50x70 cm	
9511100 Venezia	70x100 cm	



9510100 Italia | 70x100 cm



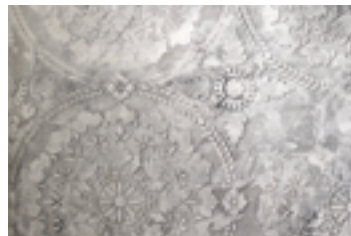
9510200 India | 50x70 cm



9510300 Oriental | 50x70 cm



9510400 Arabic | 50x70 cm



9510500 Africa | 58x58 cm



9510600 Marocco | 53x79 cm



9510700 Galizia | 53x79 cm



9510800 Andalusia | 53x79 cm



9510900 Katalania | 53x79 cm



9511000 Industrial | 50x70 cm



9511100 Venezia | 70x100 cm

962

Kronen® Wax-Finish



Wax polish for all smooth interiors. Kronen® Wax Finish is a special finish to provide all smooth interior surfaces with a higher gloss, in particular for smoothing and marbling techniques with Jaeger Stucco Veneziano.

- Can be polished to a high gloss
- Protects the surface
- Enhances the vibrancy and depth of colour
- Spreading rate: Approx. 20 g/m²



Item No./ Shade	Container size	Carton contents
962-0000 clear	300 g	

963

Kronen® Exquisit-Finish



Gold, silver, bronze and brass finishing wax for enhancing all smooth interior surfaces. In particular, as the final coating for smoothing techniques using Jaeger Stucco Veneziano.

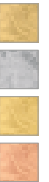
- Can be polished to a high gloss
- Protects the surface
- Spreading rate: Approx. 15-25 g/m²



Scan here for the video



Item No./ Shade	Container size	Carton contents
963-0700 pure gold	300 g	
0701 pure silver	450 g	
0705 brass	450 g	
0706 bronze	300 g	



985

Antique Soap



Wax soap made of bleached beeswax, free of oils. For the decorative finishing and as a polishing aid for plaster like e.g. Jaeger Antiqua, Epoca Marble indoors. Usage: Thinly apply 1-2 times with trowel depending on the desired effect. The surface can be polished after drying in order to receive an antique-aeruginous surface.

- protects the surface
- water-insoluble after drying
- increases colour brilliance and colour depth
- Spreading rate: 30 - 50 ml/m², depending on the absorbency of the surface



Item No./ Shade	Container size	Carton contents
985-0000 clear	1 kg	

940

Shade Cards Smoothing Techniques



The Jaeger shade cards offer 88 sensational shades. The shades contained in the cards are available in the qualities Stucco Veneziano, Stucco Fondo and Fresco Veneziano, Stucco Romano and Epoca Marble. The four metallic waxes are a special highlight: real gold, real silver, brass and bronze.

- 88 attractive shades
- Stucco Fondo
- Stucco Veneziano
- Stucco Romano
- Epoca Marble
- Fresco Veneziano
- Metallic putty wax
- Jaeger Antiqua

Item No./ Shade	Container size	Carton contents
940-0000	Pc.	

VILLA VENEZIA CREATIVE TECHNIQUES

973

Veneziano Spatula



Special tool for applying the decorative Villa Venezia products.



Item No./ Shade	Container size	Carton contents
973-0008 8 cm	Pc.	
973-0012 12 cm		

974

Finishing Trowel



Special tool for applying the decorative Villa Venezia products.

Dimensions:
200 x 80 mm und 240 x 100 mm



Item No./ Shade	Container size	Carton contents
974-0000 20x8 cm	Pc.	
974-0001 24x10 cm		

920

Trowel



Special tool for applying the decorative Villa Venezia products.

Dimensions: 280 x 120 mm



Item No./ Shade	Container size	Carton contents
920-0000 28x12 cm	Pc.	



964

Mineral Paint Concentrate

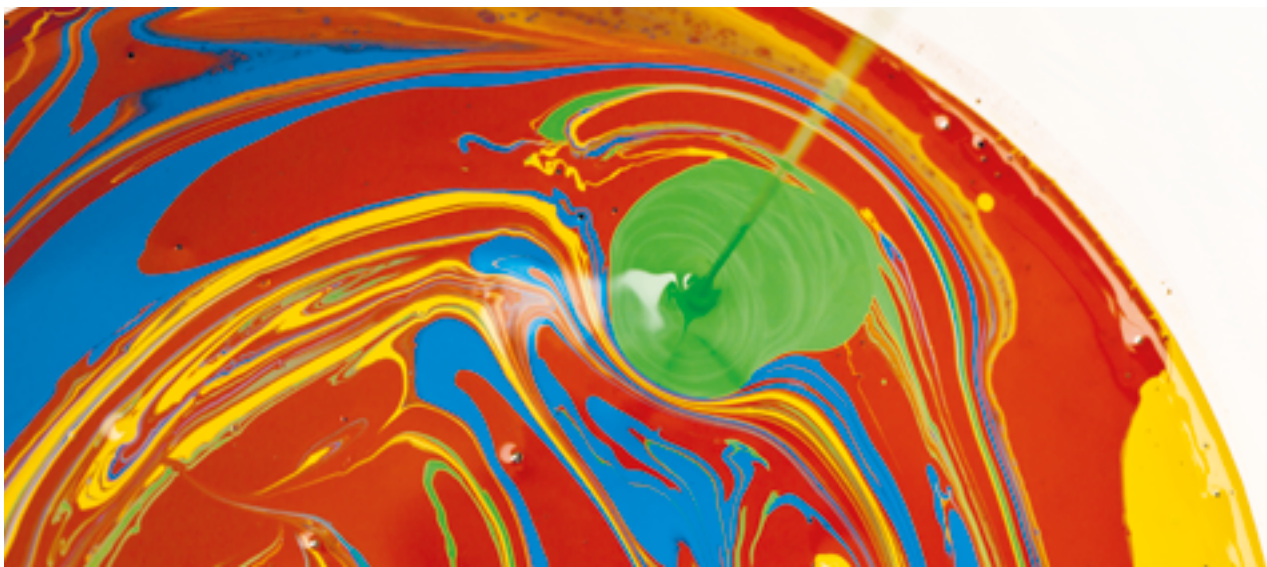


Pigment concentrate for tinting all of the products in the Villa Venezia product range. The mineral paint concentrate is suitable for use with Jaeger Stucco Fondo, Jaeger Stucco Veneziano, Jaeger Fresco Veneziano, Jaeger Antiqua and for scumbling effects with Jaeger Epoca Marble, Velatura, Calce Colore, Stucco Romano.

- Resistant to acids and alkalis
- Weather-resistant
- Resistant to the effects of light



Item No./ Shade	Container size	Carton contents
964-	250 ml	
0014 yellow		
0020 orange		
0050 blue		
0060 green		
0090 black		
0110 red		



DECO WALL & FLOOR

SEAMLESS WALL AND FLOOR FILLER

933

1C Deco Wall & Floor plus



Ready-to-use filler for seamless surfaces. Decorative filler for floor and wall surfaces. Ideal for offices, bathrooms and commercial premises. Ready to use, can be diluted up to 5% with water

- Elegant loft look
- Suitable for wall surfaces in wet areas (with 2K wet room sealer)
- Very good water resistance
- Ready to use
- Easy to apply
- Suitable as a wall coating and levelling floor
- Can be tinted at the factory in 28 different colours
- Consumption: ca. 1 kg/m² per layer

Item No./ Shade	Container size	Carton contents
933-0800 933-0... Colour code Choose from numerous colours from the colour chart	20 kg	

 new



923

Deco Wall & Floor



Seamless wall and floor design. With JAEGER DECO WALL & FLOOR, visually sophisticated seamless wall and floor surfaces are achieved that are not only extremely attractive, but also resistant and durable. The highlight: DECO WALL & FLOOR can even be used on walls in wet areas!

- resistant to water, dirt and common household cleaning agents
- suitable for wet areas (with 2K Aqua Wet Room Sealer)
- can be applied to many substrates
- suitable as wall coating and filler floor
- can be tinted at the factory in 28 different colours
- Consumption: approx. 800 g/m² per layer

Item No./ Shade	Container size	Carton contents
923-9010 923-0... Colour code Choose from numerous shades on the Colour chart	4 kg 20 kg	



975

Deco Wall & Floor System toolbox



System tool equipped with 3 different trowels for the application of Deco Wall & Floor. The trowels are manufactured with a customised blade thickness. In addition, all trowels are treated with a special alloy to prevent metal abrasion.

- No metal abrasion
- 3 different blade thicknesses in different sizes

Item No./ Shade	Size
975-0000	Tool case equipped with 3 trowels
975-0001 Classic	200 x 80 x 0,6 mm
975-0002 Flex	240 x 100 x 0,5 mm
975-0003 ProFlex	300 x 110 x 0,3 mm

 new



676

2K Aqua Deco Wall & Floor Sealer



Colourless, water-thinnable 2-component PU sealing lacquer for Deco Wall & Floor. Intended use: Protection and sealing of floor and wall surfaces finished with Deco Wall & Floor for upmarket private areas.

- easy to process
- excellent abrasion resistance
- high durability
- very good penetration
- good flow
- excellent resistance to household chemicals
- Spreading rate (m²/kg): approx. 8 per coat



Item No./ Shade	Container size	Carton contents
676-0003 Colourless Silk matt	2,5 kg	

677

2K Aqua Wet Room Sealer



High-quality wet room sealer for Deco Wall & Floor. Colourless, water-thinnable 2-component sealing lacquer based on acrylic polymer and aliphatic polyurethane. Intended use: Protection and sealing of floor and wall surfaces finished with Deco Wall & Floor in wet and kitchen areas.

- easy to process
- excellent abrasion resistance
- high durability
- very high filling power
- good flow
- excellent resistance to household chemicals
- very good water resistance
- very good heat resistance
- Spreading rate (m²/kg): ca. 10-12 per coat



Item No./ Shade	Container size	Carton contents
677-0104 Colourless matt	1,3 kg	

877

2K Aqua Primer concentrate



2K Aqua Primer Concentrate 877 is the ideal primer on Deco Wall & Floor before sealing with Deco Wall & Floor Seal 676 and Wet Room Seal 677. The primer reduces water absorption, solidifies and closes the pores.

- Hydrophobic Primer
- Aqueous, no odour
- Easy to apply
- Very high penetration
- Solidifying
- Not film-forming
- Spreading rate (m²/kg): ca. 10



Item No./ Shade	Container size	Carton contents
877-0000 clear	750 g	

084

Deco Wall & Floor Cleaning and Care Concentrate



Deco Wall & Floor Cleaning and Care Concentrate is ideal for regular maintenance cleaning of surfaces treated with Deco Wall & Floor as well as for cleaning and care of varnished parquet, wooden floors, PVC, CV, polyolefin, cork, linoleum and rubber floorings as well as natural and artificial stone.

- Cleaning and care in one step
- for regular maintenance cleaning of surfaces treated with Deco Wall & Floor



Item No./ Shade	Container size	Carton contents
084-0000	1 l	12

SPECIAL TERMS AND CONDITIONS

These terms of delivery apply in addition to the general terms of delivery and payment of the paint industry.

1. Delivery

- 1.1 In Germany, delivery for orders with a net weight of less than 100 kilograms (or a net goods value of less than approx. € 575) is „ex works“ (freight collect).
- 1.2 For orders with a net weight of more than 100 kilograms (or a net goods value of more than approx. € 575), delivery is „free domicile“.
- 1.3 Additional costs for express and urgent shipments shall be borne by the buyer. We will endeavour to choose the most favourable shipping route.
- 1.4 The minimum order value per order is € 100. If the order value falls below this, a minimum quantity surcharge of € 5,- / order will be charged.

2. Quantity discounts

We grant the following discounts on our list prices for closed purchases (except net prices) the following discounts:

starting at 250 kg net 2%	starting at 1000 kg net 4%
starting at 500 kg net 3%	starting at 2000 kg net 5%

3. Special shades

We would be happy to create special shades according to your desires

€ 3,10 je kg/l	up to 25 kg/l
€ 2,70 je kg/l	from 25 to under 50 kg/l
€ 2,40 je kg/l	from 50 to under 100 kg/l
€ 2,10 je kg/l	from 100 to under 300 kg/l

For the preparation of special recipes according to the sample template, we charge a contribution towards expenses of € 49.50 / recipe.

4. Special productions are possible.

Please ask us for the prices and delivery times.

5. Returns of goods:

Goods can only be returned after prior consultation with the factory. Only resalable products can be taken back. For handling, we charge handling costs of 25% of the value of the goods and the costs of return freight. Special articles and special colours are excluded from return.

6. We request **your payment** net within 30 days of the invoice date at the latest. For payment within 10 days, we grant a 2% discount on the value of the goods.

7. Trader obligations

The company P. Jaeger GmbH & Co. KG offers high-quality products for professional users under its JAEGER, Löwe and Keller brands and distributes them via paint wholesalers. This requires a corresponding infrastructure and consulting capability from the dealer. As a dealer of Jaeger products, you therefore undertake to fulfil the following quality assurance criteria:

7.1. You have a stationary salesroom with a minimum area of 20 sqm in which you permanently present our Jaeger products and these are available for purchase. In the sales outlet, customer service is guaranteed by qualified specialist staff.

7.2. At least four of the following criteria should also be fulfilled:

- a. The dealer shall have a professionally qualified field service for the regional support of the painting trade.
- b. The trader shall have fleet logistics with site logistics commensurate with its turnover of goods.
- c. The dealer should have a permanent stock of the essential (measured according to the market situation determined by our experience) Jaeger products in the usual wholesale quantities.
- d. The dealer regularly allows and provides support for training of its employees as well as customers by Jaeger employees.
- e. The retailer grants its professional tradesman customers the opportunity to purchase Jaeger products on account, subject to the appropriate requirements.

We reserve the right to adapt the requirements mentioned in clause 7.2. to market needs and to further develop them to strengthen the Jaeger brands.

We are entitled to verify the above criteria through visits to our partner dealers and customer surveys.

8. **In accordance with § 33 BDSG** (Federal Data Protection Act), we point out that the data arising within the framework of the contractual relationship will be stored.

GENERAL TERMS AND CONDITIONS

General terms and conditions for delivery and payment according to the recommendation and approval of the German Federal Cartel Office on 11 July 2003

I. Area of application

1. Our terms and conditions for delivery and payment are intended only for companies. They do not apply to consumers.
2. Our terms and conditions for delivery and payment shall apply exclusively. We do not accept any Buyer's terms and conditions of delivery and payment contrary hereto or deviating here from, unless we have expressly agreed to them in writing. Our offers are subject to change without notice, unless otherwise expressly stated in writing.
3. Ancillary agreements, amendments and deviations to these terms and conditions shall be agreed in writing.

II. Prices

1. The prices agreed are ex works prices plus the statutory value added tax that is applicable on the day of delivery.
2. Prices shall be calculated on the basis of the weights, quantities and amounts determined by us, unless the Buyer objects immediately or latest within 14 days upon receipt of the goods.
3. Should our prices generally be decreased or increased during the term of contract, the changed prices shall apply for the still outstanding quantities. If prices are increased, the Buyer shall be entitled to immediately withdraw from the contract by written declaration, however, latest within four weeks after the receipt of the price increase. The withdrawal does not affect deliveries, which were carried out before the price increase.

III. Application technical consultation

1. Any technical advice provided by us is formulated according to the best of our knowledge. All information and data regarding suitability and application of the supplied merchandise is non-binding and does not release the Buyer from own tests and trials. This is especially true for all cases in which our products are combined with thinners, hardeners, additional supplementary varnishes or other components that were not purchased from our company.

IV. Delivery

1. The Buyer has to pick up the goods on the agreed delivery date, or if a delivery date has not been agreed upon, immediately after notification of availability at the place of delivery, according to clause IX. 1. If the Buyer defaults in receiving the goods, we are authorised at our own option to ship the goods at Buyer's cost - and if necessary, we may store the goods outside of buildings. In such a case, we shall not be liable for the accidental deterioration, loss or destruction of the goods. If we decide to keep the goods in storage, we shall be entitled to invoice the goods after one week.
2. If, notwithstanding clause 1, it is agreed that we are responsible for shipment of the goods, the Buyer has to bear the costs of the transportation. The choice of transport means and route is made at our discretion due to lack of specific instructions. The risk transfers to the Buyer at the time when the goods are turned over to the freight carrier.
3. Partial deliveries acceptable to Buyer are permissible.
4. Major, unforeseeable disturbances not caused by us, failures to keep delivery dates, or non-deliveries by our suppliers, as well as operating disruptions due to lack of raw materials, energy or manpower, strikes, lock-outs, difficulties in providing means of transportation, forwarding disputes, rulings issued by high authorities, and in cases of force majeure affecting us and our suppliers, the period of delivery shall be extended by the period of hindrances, if the supply capability of the goods is of importance. We will notify the Buyer immediately of the beginning and end of such hindrances. If the delivery is thereby delayed by more than one month, the Buyer and we shall be entitled to withdraw from the contract without becoming liable for compensation claims with regard to the quantity to which their disruption of deliveries relates. This shall have no bearing on the Buyer's legal right to cancel the contract in case of deliveries being delayed for reasons for which we are responsible.
5. If the delivery is made in loan containers, they must be sent back to us within 90 days after receipt of the delivery, empty of residue and carriage paid. Loss of and damage to the rental packaging shall be borne by Buyer, should the Buyer be liable. Loaned packaging must not be used for purposes other than transport of the delivered goods or for taking up other products. They are intended exclusively for the transport of the delivered goods. No labelling is to be removed.
6. Non-returnable packaging shall not be taken back by us, instead, we name the Buyer a third party that recycles the packaging according to the packaging ordinance.

V. Payment

1. The billing amount shall be payable without deductions within 30 days. Payment is only deemed to be on time if we can dispose of the money and it is credited on the due date to the account provided by us.
2. In the event of delay in payment, interest on arrears is payable at 8% above the base rate of interest. Both, Buyer and we, are free to prove higher or lower damage due to delayed performance.
3. Providing a bill of exchange does not constitute a cash payment. Such bills may be used in payment only with our previous consent. Any fees for bills of discount or exchange shall be at the expense of the Buyer.
4. Retention of payments or setting off against Buyer's claims, which are not accepted by us, is not permissible.
5. Failure to pay invoices fallen due and other circumstances, which suggest an essential deterioration in the Buyer's financial circumstances after the conclusion of the contract, will result in claims for all payments becoming due immediately, which are based upon the same legal relationship.

VI. Reservation of proprietary rights

1. We reserve the right to retain the ownership of the delivery item until the complete payment of the purchase price. All delivered goods remain our property until satisfaction of all accounts receivable arising from the on-going business relationship with the Buyer. The reservation of proprietary rights shall also remain in force if individual debts receivable are added to a running account and the balance has been struck and approved. Payments notwithstanding, purchase price debts will not be regarded as settled as long as any reciprocal liability we have assumed in this connection continues to exist - such as in a cheque-bill of exchange process.

2. The Buyer shall perform processing or mixing for us without creating a liability for us. In case of processing or mixing with other items not owned by us, the Buyer shall already at this time assign to us a co-title to the new items in the ratio of the value of the goods, with respect to other processed items on condition that Buyer preserves the new items for us.

3. The Buyer shall be entitled to dispose of products in the course of its ordinary business, provided that it meets its obligation arising from the business connection with us in the agreed time.

4. The Buyer assigns to us already now as security all proprietary rights from the sale of goods that we (completely or in part) own to the extent of our ownership share.

If the Buyer connects or mixes the delivered goods with a main item of a third party against payment, it hereby assigns its claims against the third person up to the amount of the invoice value of the goods delivered for security reasons to us. We shall accept these assignments.

5. At our request, the Buyer shall provide us with any requisite information about the stock of goods in which we retain proprietary rights and must notify its customers of such assignment(s).

6. The Buyer shall be obligated to preserve the conditional goods with due care and to insure said goods at its own cost against loss and damage. The Buyer hereby assigns to us in advance its claims from the insurance contracts. We shall accept these assignments.

7. Should the value of the securities exceed our claims by more than 20%, we will, to that extent, at the Buyer's request, release securities of our choice.

8. Buyer's right to dispose of the products that are subject to our proprietary rights as well as the collection of claims assigned to us shall expire as soon as Buyer discontinues payment and/or experiences financial collapse.

When these prerequisites should become the case, we are entitled under the exclusion of all retention rights, without setting a further deadline or withdrawing from the contract, to the immediate provisional surrender of all goods under reservation of our proprietary right.

9. Should proprietary rights not be legally effective according to the laws of the country in which the proprietary goods are located, the Buyer shall have to provide an equivalent collateral if so demanded by us. If it fails to comply with this request, we can require immediate payment of all outstanding invoices, regardless of agreed payment dates.

VII. Claims for defects

1. Immediately upon receipt, the Buyer shall examine the goods for defects.
2. Open defects shall be reported in writing either immediately but no later than 14 days after receipt of the goods. Hidden defects shall be reported latest within 14 days after their discovery. The notification must be in writing and shall precisely describe the nature and extent of the defect.
3. For properly submitted and legally justified notifications of defects, we shall be entitled to removal of the defects or to a replacement delivery. In the event of a removal of the defects, we are committed to bear all expenses for this purpose, provided the goods were not transported to another location than the place of fulfilment. If we are not prepared or able to remedy the defect/provide a replacement delivery, in particular, if the appropriate deadlines are delayed for reasons, for which we are accountable, or if the remedying of the defect/replacement delivery fails, the Buyer is entitled to the cancellation of the contract or to demand a corresponding reduction of the purchase price.
4. All claims arising from a defect shall lapse 12 months after the Buyer received the goods, provided the delivered goods have not been used in accordance with its usual utilisation for a building and caused the building's defects.
5. In the case of entrepreneur's recourse (§ 478 of the German Civil Code), we are entitled to refuse the Buyer's rights of recourse with the exception of claims of new delivery of the goods and reimbursement of expenses, provided we grant the Buyer for the exclusion of its rights a similar compensation. Claims on the part of the Buyer for damages are excluded, without that we have to grant it any compensation.

VIII. Liability

1. Unless otherwise agreed, all further claims by the Buyer for compensatory damages against our employees, workers, personnel, representatives and vicarious agents are excluded. This applied in particular to any damages compensation claim not originating from the delivered goods themselves.
2. The limitations and exclusions of liability contained in these delivery and payment terms shall not apply, if in cases of intent, gross negligence, fraudulent concealment or injury to life, body and health, or as a consequence of an accepted quality or service life guarantee or in accordance with the regulations of the German Product Liability Act, a liability on our part is mandatory. The same shall be applicable in case of a breach of duty on our part, which endangers the fulfilment of the contract purpose. However, in such a case, the liability shall be limited to the replacement of a typical foreseeable damage.

IX. Place of performance, jurisdiction and other provisions

1. The place of performance for all liabilities from business relationships or from the individual contract is our respective shipping centre and for payments it is our company headquarter.
2. The jurisdictional venue at our option may be our headquarter or the Buyer's general jurisdictional venue. This also applies to disputes relating to deed, bill or check litigations.
3. The law of the Federal Republic of Germany shall be applicable exclusively to contractual relationships with our Buyers. The applicability of the UN Sales Convention of 11 April 1980, regarding contracts relating to the international purchasing of goods (CISG - "Vienna Sales Convention") shall be excluded.
4. The Buyer's data will be stored and processed by us to the extent that this is required for the proper handling of contractual relationships.

Available on all channels



[instagram.com/jaegerlacke/](https://www.instagram.com/jaegerlacke/)



[facebook.com/jaegerlacke](https://www.facebook.com/jaegerlacke)



[youtube.com/jaegerlacke](https://www.youtube.com/jaegerlacke)



[tiktok.com/@jaegerlacke](https://www.tiktok.com/@jaegerlacke)



[pinterest.de/jaegerlacke](https://www.pinterest.de/jaegerlacke)



WhatsApp



 **JAEGER**

Specialities that inspire



www.jaegerlacke.de